

Ice Sheet System Model

ISSM Capabilities

Chris BORSTAD¹, Bao DUONG^{5,1}, Feras HABBAL^{2,1}, Daria HALKIDES^{1,3},
Michiel HELSEN², **Eric LAROUR**¹, Mathieu MORLIGHEM², Lan NGUYEN^{5,1},
Gilberto PÉREZ^{4,1}, Eric RIGNOT^{2,1}, John SCHIERMEIER¹,
Nicole SCHLEGEL¹, Hélène SEROUSSI¹

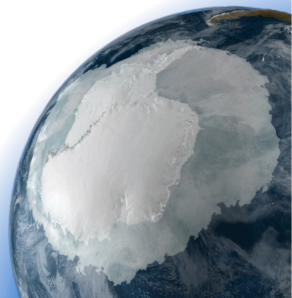
¹Jet Propulsion Laboratory - California Institute of Technology

²University of California, Irvine

³Joint Institute for Regional Earth System Science & Engineering, UCLA

⁴University of Southern California

⁵Cal Poly Pomona



Capabilities

Outline

Introduction

Capabilities

Diagnostic Models

Inversion

Parallel Computing

Rifting/Faulting

Higher-order, Full-Stokes

Anisotropic Adaptation

Prognostic Models

Thermal Analysis

Sensitivity Analysis

Ice Thickness Assimilation

3D Hydrostatic Grounding

Line Migration

Hydrology

Ice/Atmosphere

Interaction

What ISSM cannot do

Ice flow models

Basal conditions

Inversion and data
assimilationIce/atmosphere
interactions

Ice/ocean interactions

Other capabilities

Numerics

Conclusions

1 Introduction

2 Capabilities

3 What ISSM cannot do

4 Conclusions

Capabilities

Introduction

Capabilities

Diagnostic Models
Inversion
Parallel Computing
Rifting/Faulting
Higher-order, Full-Stokes
Anisotropic Adaptation
Prognostic Models
Thermal Analysis
Sensitivity Analysis
Ice Thickness Assimilation
3D Hydrostatic Grounding
Line Migration
Hydrology
Ice/Atmosphere
Interaction

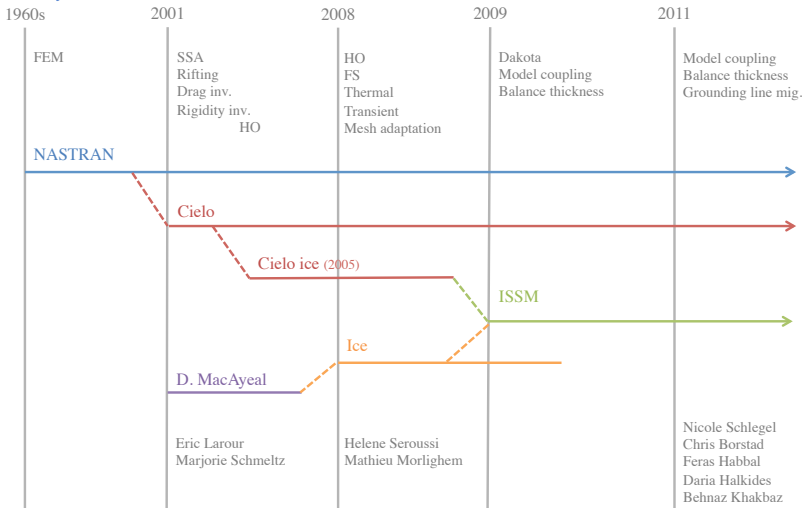
What ISSM cannot do

Ice flow models
Basal conditions
Inversion and data
assimilation
Ice/atmosphere
interactions
Ice/ocean interactions
Other capabilities
Numerics

Conclusions

Introduction

History of ISSM



NASA

Jet Prop. Lab.

Ecole Centrale Paris

Univ. Calif. Irvine

Capabilities

Introduction

Capabilities

Diagnostic Models

Inversion

Parallel Computing

Rifting/Faulting

Higher-order, Full-Stokes

Anisotropic Adaptation

Prognostic Models

Thermal Analysis

Sensitivity Analysis

Ice Thickness Assimilation

3D Hydrostatic Grounding

Line Migration

Hydrology

Ice/Atmosphere

Interaction

What ISSM cannot do

Ice flow models

Basal conditions

Inversion and data

assimilation

Ice/atmosphere

interactions

Ice/ocean interactions

Other capabilities

Numerics

Conclusions

Diagnostic models of ice flow

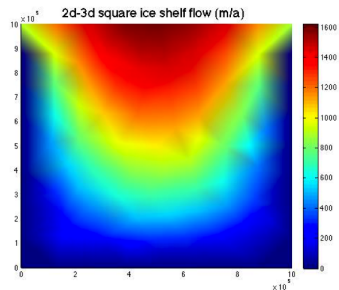
Solve mechanical stress-equilibrium for the entire ice sheet/ice shelf. Can be done in 2D (SSA) or 3D (SIA, Higher-order, Full-Stokes). Material is isotropic nonlinear (Glen's law) in the creep regime of deformation.

$$\nabla \cdot \vec{V} = 0$$

$$\rho \frac{d\vec{V}}{dt} = \nabla \cdot \sigma + \rho \vec{g}$$

$$\sigma'_{ij} = 2\eta \dot{\epsilon}_{ij}$$

$$\eta = \frac{1}{2} A(\theta)^{-1} \left(\dot{\epsilon} + \dot{\epsilon}_0 \right)^{\frac{(1-n)}{n}}$$



Capabilities

Inversion

Introduction

Capabilities

Diagnostic Models

Inversion

Parallel Computing

Rifting/Faulting

Higher-order, Full-Stokes

Anisotropic Adaptation

Prognostic Models

Thermal Analysis

Sensitivity Analysis

Ice Thickness Assimilation

3D Hydrostatic Grounding

Line Migration

Hydrology

Ice/Atmosphere

Interaction

What ISSM cannot do

Ice flow models

Basal conditions

Inversion and data

assimilation

Ice/atmosphere

interactions

Ice/ocean interactions

Other capabilities

Numerics

Conclusions

Rely on surface velocities (InSAR) to invert unknown parameters in the ice flow equations, such as viscosity, ice rigidity or basal drag.

$$J' = \iint_S \frac{1}{2} \left\{ (u - u_{obs})^2 + (v - v_{obs})^2 \right\} dx dy +$$

$$\iint_S \lambda(x,y) \left\{ \frac{\partial}{\partial x} \left(2\nu H \left(2 \frac{\partial u}{\partial x} + \frac{\partial v}{\partial y} \right) \right) + \frac{\partial}{\partial y} \left(\nu H \left(\frac{\partial u}{\partial y} + \frac{\partial v}{\partial x} \right) \right) - \rho g H \frac{\partial z_s}{\partial x} - \beta^2 u \right\} dx dy +$$

$$\iint_S \mu(x,y) \left\{ \frac{\partial}{\partial y} \left(2\nu H \left(2 \frac{\partial v}{\partial y} + \frac{\partial u}{\partial x} \right) \right) + \frac{\partial}{\partial x} \left(\nu H \left(\frac{\partial u}{\partial y} + \frac{\partial v}{\partial x} \right) \right) - \rho g H \frac{\partial z_s}{\partial y} - \beta^2 v \right\} dx dy$$

$$\frac{dJ'}{d\beta} = -2 \iint_S \{ \lambda u + \mu v \} \beta d\beta dx dy$$

Capabilities

Inversion

Introduction

Capabilities

Diagnostic Models

Inversion

Parallel Computing

Rifting/Faulting

Higher-order, Full-Stokes

Anisotropic Adaptation

Prognostic Models

Thermal Analysis

Sensitivity Analysis

Ice Thickness Assimilation

3D Hydrostatic Grounding

Line Migration

Hydrology

Ice/Atmosphere

Interaction

What ISSM cannot do

Ice flow models

Basal conditions

Inversion and data

assimilation

Ice/atmosphere

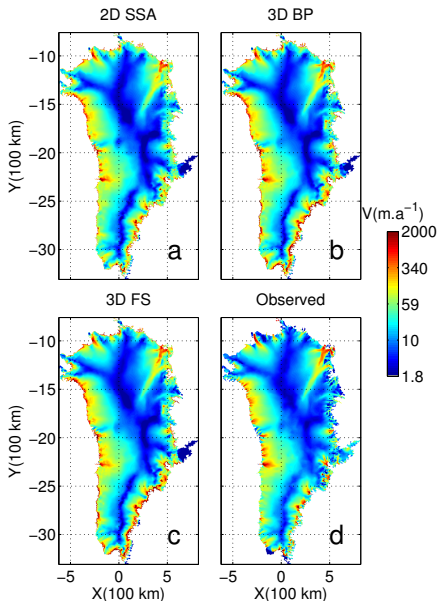
interactions

Ice/ocean interactions

Other capabilities

Numerics

Conclusions



Capabilities

Parallel computing

Introduction

Capabilities

Diagnostic Models

Inversion

Parallel Computing

Rifting/Faulting

Higher-order, Full-Stokes

Anisotropic Adaptation

Prognostic Models

Thermal Analysis

Sensitivity Analysis

Ice Thickness Assimilation

3D Hydrostatic Grounding

Line Migration

Hydrology

Ice/Atmosphere
Interaction

What ISSM cannot do

Ice flow models

Basal conditions

Inversion and data
assimilationIce/atmosphere
interactions

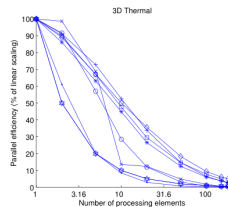
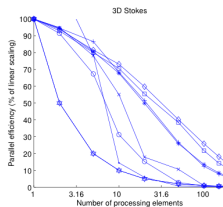
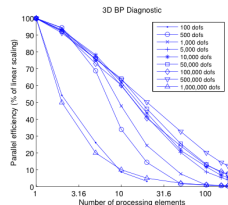
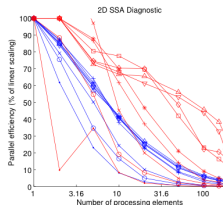
Ice/ocean interactions

Other capabilities

Numerics

Conclusions

- ISSM can run on any platform (multi-core desktop), shared or distributed cluster
- C++ implementation of computational core using MPICH and PETSc libraries + array of parallel libraries for partitioning, iterative and direct solvers
- Multi-threading of pre and post-processing modules to increase speed significantly



Capabilities

Parallel libraries

ISSM relies on a series of libraries to implement parallelism:

- PETSc Portable, Extensible Toolkit for Scientific Computation [Balay et al., 1997, Balay et al., 2008, Balay et al., 2009]. PETSc is a suite of data structures and routines for the scalable solution of scientific applications modeled by partial differential equations. Used mainly for its parallel structures (Vec and Mat objects) and iterative parallel solvers.
- MPICH1,2: Message Passing Interface [Gropp et al., 1996, Gropp and Lusk, 1996] to manage parallel communications between all cpus during solution sequences.
- METIS: Software Package for Partitioning Unstructured Graphs, Partitioning Meshes, and Computing Fill-Reducing Orderings of Sparse Matrices [Karypis and Kumar, 1998]. This package is used to partition objects such as elements and vertices across a cluster. This partitioning scheme results in partitions that have equal numbers of elements on each cluster node.
- MUMPS: Multifrontal Massively Parallel Sparse direct solver [Amestoy et al., 2001, Amestoy et al., 2006]. Direct solver that suffers few convergence issues. Relied upon often for the solution of any system of equations.

Introduction

Capabilities

Diagnostic Models

Inversion

Parallel Computing

Rifting/Faulting

Higher-order, Full-Stokes

Anisotropic Adaptation

Prognostic Models

Thermal Analysis

Sensitivity Analysis

Ice Thickness Assimilation

3D Hydrostatic Grounding

Line Migration

Hydrology

Ice/Atmosphere

Interaction

What ISSM cannot do

Ice flow models

Basal conditions

Inversion and data

assimilation

Ice/atmosphere

interactions

Ice/ocean interactions

Other capabilities

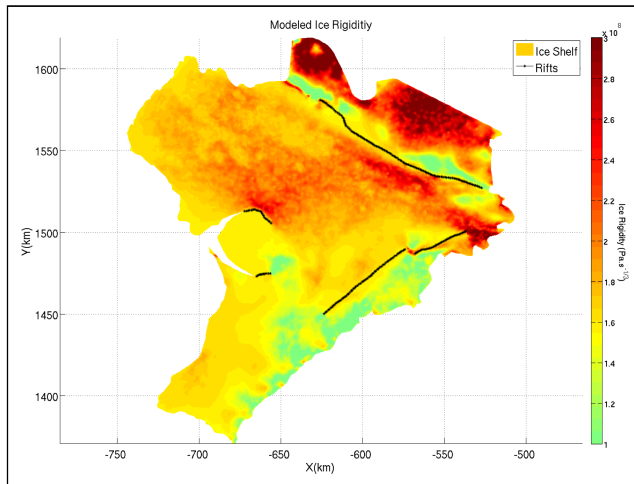
Numerics

Conclusions

Capabilities

Rifting/Faulting

ISSM can account for the presence of rifts and faults in an ice shelf by carrying out a steady-state computation of the contact within the rifts/faults.



Capabilities

Rifting/Faulting

Introduction

Capabilities

Diagnostic Models

Inversion

Parallel Computing

Rifting/Faulting

Higher-order, Full-Stokes

Anisotropic Adaptation

Prognostic Models

Thermal Analysis

Sensitivity Analysis

Ice Thickness Assimilation

3D Hydrostatic Grounding

Line Migration

Hydrology

Ice/Atmosphere

Interaction

What ISSM cannot do

Ice flow models

Basal conditions

Inversion and data
assimilationIce/atmosphere
interactions

Ice/ocean interactions

Other capabilities

Numerics

Conclusions

- Rifting and faulting account for contact stresses and the presence of mélange
- This is not an initiation or propagation capability
- Relies on penalty methods to enforce contact conditions between flanks of rifts
- Relies on diagnostic model to compute stresses across ice shelf
 - This is not an LEFM capability. It assumes the entire ice shelf is creeping, and there is no inclusion of elastic stresses

Capabilities

Damage Mechanics

ISSM can also introduce a damage variable into Glen's law, to account and invert for the presence of damage through the thickness of an ice shelf. For more details, we refer to Borstad et al, 2012.

Introduction

Capabilities

Diagnostic Models

Inversion

Parallel Computing

Rifting/Faulting

Higher-order, Full-Stokes

Anisotropic Adaptation

Prognostic Models

Thermal Analysis

Sensitivity Analysis

Ice Thickness Assimilation

3D Hydrostatic Grounding

Line Migration

Hydrology

Ice/Atmosphere

Interaction

What ISSM cannot do

Ice flow models

Basal conditions

Inversion and data

assimilation

Ice/atmosphere

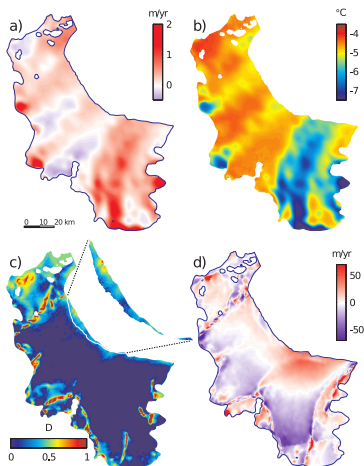
interactions

Ice/ocean interactions

Other capabilities

Numerics

Conclusions



Capabilities

Introduction

Capabilities

Diagnostic Models

Inversion

Parallel Computing

Rifting/Faulting

Higher-order, Full-Stokes

Anisotropic Adaptation

Prognostic Models

Thermal Analysis

Sensitivity Analysis

Ice Thickness Assimilation

3D Hydrostatic Grounding

Line Migration

Hydrology

Ice/Atmosphere

Interaction

What ISSM cannot do

Ice flow models

Basal conditions

Inversion and data

assimilation

Ice/atmosphere

interactions

Ice/ocean interactions

Other capabilities

Numerics

Conclusions

Higher-order and Full-Stokes modeling

- ISSM relies on the the 2D SSA to capture longitudinal stresses, 3D Blatter/Pattyn to capture vertical shear stresses and full-Stokes equations to capture all stresses within the ice sheet
- Activation of all three formulations is seamless, relying on almost the same model setup → experimentation is easy
- Coupled with parallel computing and anisotropic meshing, higher-order modeling at the continental scale is achievable with reasonable resolutions

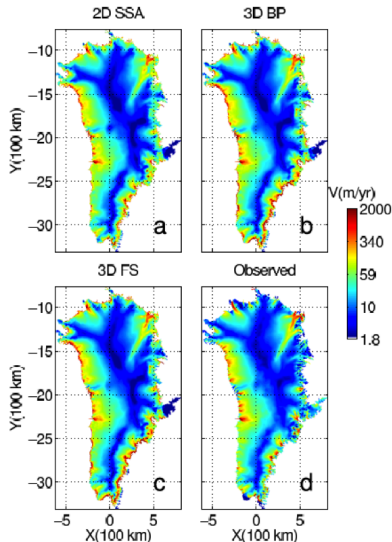


Figure 8. Modeled surface velocity (in m/yr) (using inverted basal drag coefficient) for the 2D Shallow-Stream model (a), the 3D Blatter/Pattyn model (b) and the 3D full-Stokes model (c). d) Observed InSAR surface velocities (in m/yr) of the Greenland Ice Sheet.

Capabilities

Anisotropic adaptation

Introduction

Capabilities

Diagnostic Models

Inversion

Parallel Computing

Rifting/Faulting

Higher-order, Full-Stokes

Anisotropic Adaptation

Prognostic Models

Thermal Analysis

Sensitivity Analysis

Ice Thickness Assimilation

3D Hydrostatic Grounding

Line Migration

Hydrology

Ice/Atmosphere

Interaction

What ISSM cannot do

Ice flow models

Basal conditions

Inversion and data

assimilation

Ice/atmosphere

interactions

Ice/ocean interactions

Other capabilities

Numerics

Conclusions

- Adapt mesh according to a metric, such as surface velocity
- Static capability, not transient adaptation
- Relies on a rewrite of the BAMG anisotropic mesher [Hecht, 2006]

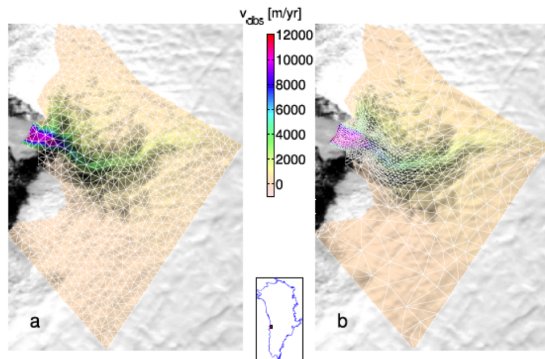


Figure 2. Anisotropic adaptive mesh of Jakobshavn Isbrae, West Greenland. a) InSAR surface velocity interpolated on a uniform mesh, b) InSAR surface velocity from *Rignot [2008]* interpolated on adapted mesh (in white). Both meshes comprise 1,500 elements.

Capabilities

Prognostic modeling

Introduction

Capabilities

Diagnostic Models

Inversion

Parallel Computing

Rifting/Faulting

Higher-order, Full-Stokes

Anisotropic Adaptation

Prognostic Models

Thermal Analysis

Sensitivity Analysis

Ice Thickness Assimilation

3D Hydrostatic Grounding

Line Migration

Hydrology

Ice/Atmosphere
Interaction

What ISSM cannot do

Ice flow models

Basal conditions

Inversion and data
assimilationIce/atmosphere
interactions

Ice/ocean interactions

Other capabilities

Numerics

Conclusions

- Mass transport equations:

$$\frac{\partial H}{\partial t} + \nabla \cdot H \bar{\mathbf{v}} = \dot{M}_s - \dot{M}_b$$

- Update of surface and bed is hydrostatic on ice shelves. For ice sheets, surface is updated assuming the bedrock is fixed
- Mass transport equations are coupled with diagnostic and thermal models to allow for complete transient models to be run (SeaRISE 2011)
- Boundary conditions assume fixed thickness at the ice divide, and free flux of mass at the calving front or the grounded margins
- Calving front dynamics not included yet
- Grounding line dynamics is hydrostatically treated

Capabilities

Thermal modeling

Introduction

Capabilities

Diagnostic Models

Inversion

Parallel Computing

Rifting/Faulting

Higher-order, Full-Stokes

Anisotropic Adaptation

Prognostic Models

Thermal Analysis

Sensitivity Analysis

Ice Thickness Assimilation

3D Hydrostatic Grounding

Line Migration

Hydrology

Ice/Atmosphere

Interaction

What ISSM cannot do

Ice flow models

Basal conditions

Inversion and data

assimilation

Ice/atmosphere

interactions

Ice/ocean interactions

Other capabilities

Numerics

Conclusions

- Thermal model, full-advection and full-diffusion in 3D + viscous heating. Mesh velocity in vertical direction. Solve for temperature.

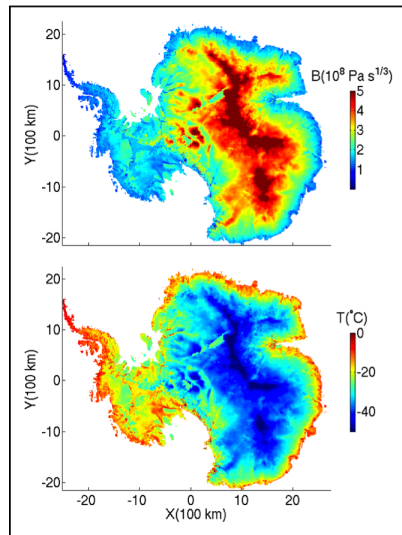
$$\frac{\partial T}{\partial t} = (\mathbf{w} - \mathbf{v}) \cdot \nabla T + \frac{k_{th}}{\rho C} \Delta T + \frac{\Phi}{\rho C}$$

- Boundary conditions:
 - $T = T_s$ at surface
 - At ice/bed interface:

$$k_{th} \nabla T \cdot \mathbf{n} = G - \tau_b \cdot \mathbf{v}_b$$

- [Holland and Jenkins, 1999] at the ice/ocean interface:

$$k_{th} \nabla T \cdot \mathbf{n} = -\rho_w c_p M \gamma (T - T_f)$$



Capabilities

Introduction

Capabilities

Diagnostic Models

Inversion

Parallel Computing

Rifting/Faulting

Higher-order, Full-Stokes

Anisotropic Adaptation

Prognostic Models

Thermal Analysis

Sensitivity Analysis

Ice Thickness Assimilation

3D Hydrostatic Grounding

Line Migration

Hydrology

Ice/Atmosphere

Interaction

What ISSM cannot do

Ice flow models

Basal conditions

Inversion and data

assimilation

Ice/atmosphere

interactions

Ice/ocean interactions

Other capabilities

Numerics

Conclusions

Melting at the ice/bed interface

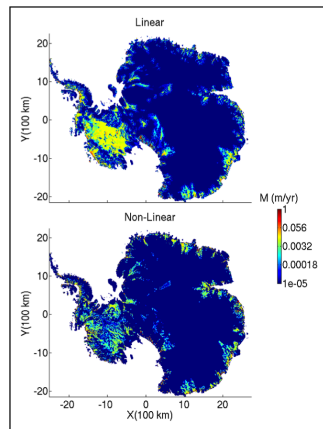
- Two models for computing melting rates:

- Linear model where computation of temperatures is updated once for each temperature that goes above pressure melting point
- Non-linear model where fixed-point scheme is used, where temperatures are updated until all of temperature field is below or at pressure melting point

Melting rate is recovered using:

$$S = \frac{\lambda}{\rho_{ice} L} \left(\frac{dT^*}{dz} - \frac{dT}{dz} \right)$$

where T^* is the temperature without pressure melting point constraints and T is the temperature after application of constraints. Non-linear model results in much lower melting rates, even though locations for melting are similar. It is critical to take into account non-linearity of thermal model, at least in steady-state!



Capabilities

Thermal modeling

Introduction

Capabilities

Diagnostic Models

Inversion

Parallel Computing

Rifting/Faulting

Higher-order, Full-Stokes

Anisotropic Adaptation

Prognostic Models

Thermal Analysis

Sensitivity Analysis

Ice Thickness Assimilation

3D Hydrostatic Grounding

Line Migration

Hydrology

Ice/Atmosphere

Interaction

What ISSM cannot do

Ice flow models

Basal conditions

Inversion and data
assimilationIce/atmosphere
interactions

Ice/ocean interactions

Other capabilities

Numerics

Conclusions

New thermal model, based on [Aschwanden et al., 2012]. Enthalpy formulation, allows to recover more physically consistent melting rates.

Avoids relying on penalty formulations to constrain temperature to pressure melting point. System of equations is better conditioned – > more favourable for iterative solvers.

Capabilities

Sensitivity analysis

Introduction

Capabilities

Diagnostic Models

Inversion

Parallel Computing

Rifting/Faulting

Higher-order, Full-Stokes

Anisotropic Adaptation

Prognostic Models

Thermal Analysis

Sensitivity Analysis

Ice Thickness Assimilation

3D Hydrostatic Grounding

Line Migration

Hydrology

Ice/Atmosphere

Interaction

What ISSM cannot do

Ice flow models

Basal conditions

Inversion and data

assimilation

Ice/atmosphere

interactions

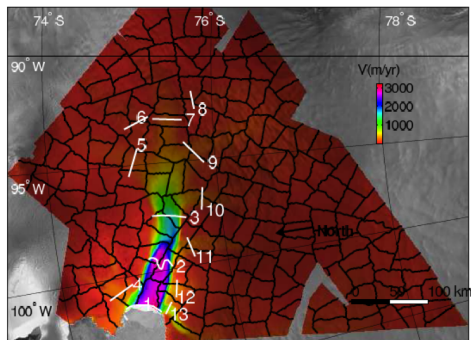
Ice/ocean interactions

Other capabilities

Numerics

Conclusions

- Sampling and local reliability methods to study the impact of different areas of the mesh
- Sampling of the mesh using Chaco, Scotch and Metis partitioners
- Partition the mesh into equal area subsection*s, which can be then updated for each sample of a Monte-Carlo or local reliability simulation



Capabilities

Sensitivity analysis

Introduction

Capabilities

Diagnostic Models

Inversion

Parallel Computing

Rifting/Faulting

Higher-order, Full-Stokes

Anisotropic Adaptation

Prognostic Models

Thermal Analysis

Sensitivity Analysis

Ice Thickness Assimilation

3D Hydrostatic Grounding

Line Migration

Hydrology

Ice/Atmosphere
Interaction

What ISSM cannot do

Ice flow models

Basal conditions

Inversion and data
assimilationIce/atmosphere
interactions

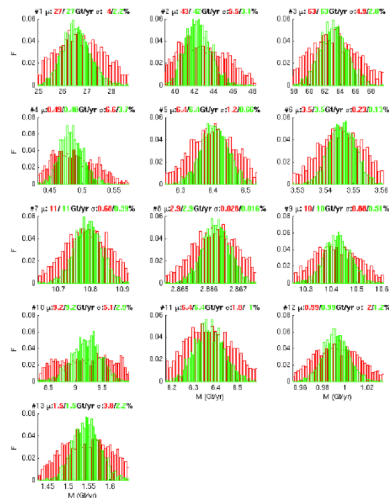
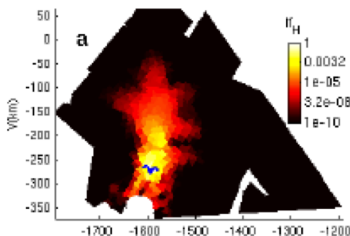
Ice/ocean interactions

Other capabilities

Numerics

Conclusions

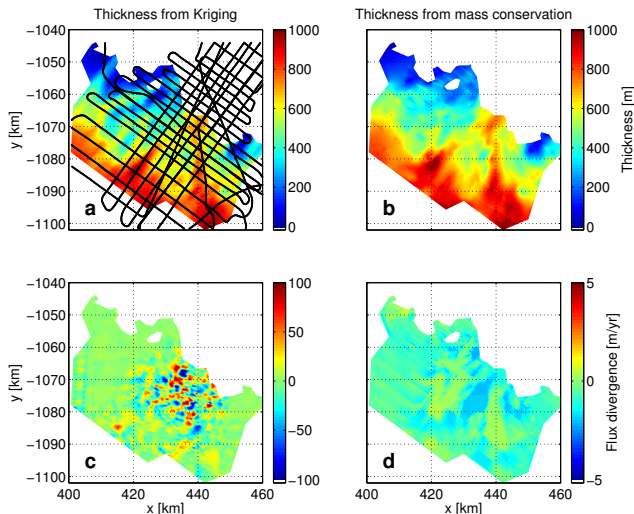
- Results can then be plotted in histograms for sampling analysis or importance factors for local reliability methods



Capabilities

Assimilation of ice thickness (balanced thickness)

- Ice thickness can be optimized to ensure smooth divergence of the flux (thinning rate) [Morlighem et al., 2011]



Introduction

Capabilities

Diagnostic Models

Inversion

Parallel Computing

Rifting/Faulting

Higher-order, Full-Stokes

Anisotropic Adaptation

Prognostic Models

Thermal Analysis

Sensitivity Analysis

Ice Thickness Assimilation

3D Hydrostatic Grounding

Line Migration

Hydrology

Ice/Atmosphere

Interaction

What ISSM cannot do

Ice flow models

Basal conditions

Inversion and data

assimilation

Ice/atmosphere

interactions

Ice/ocean interactions

Other capabilities

Numerics

Conclusions

Capabilities

3D Hydrostatic grounding line migration

Introduction

Capabilities

Diagnostic Models

Inversion

Parallel Computing

Rifting/Faulting

Higher-order, Full-Stokes

Anisotropic Adaptation

Prognostic Models

Thermal Analysis

Sensitivity Analysis

Ice Thickness Assimilation

3D Hydrostatic Grounding
Line Migration

Hydrology

Ice/Atmosphere
Interaction

What ISSM cannot do

Ice flow models

Basal conditions

Inversion and data
assimilationIce/atmosphere
interactions

Ice/ocean interactions

Other capabilities

Numerics

Conclusions

- At each time step of the transient ice flow solution, we check the following for every vertex of the mesh:

$b \leq b_a$ where b_a is the depth of the glacier bed or seafloor. For most ice sheet/ice shelf configurations, b is negative. If this condition is verified for a floating vertex (i.e., on an ice shelf), we ground the vertex and force $b = b_a$

$b > b_{HE}$ where b_{HE} is the depth of the bottom of the ice in hydrostatic equilibrium: $b_{HE} = H\rho/\rho_w$. If this condition is verified for a grounded vertex (i.e., on the ice sheet), we unground the vertex and force $b = b_{HE}$

Capabilities

3D Hydrostatic grounding line migration

Introduction

Capabilities

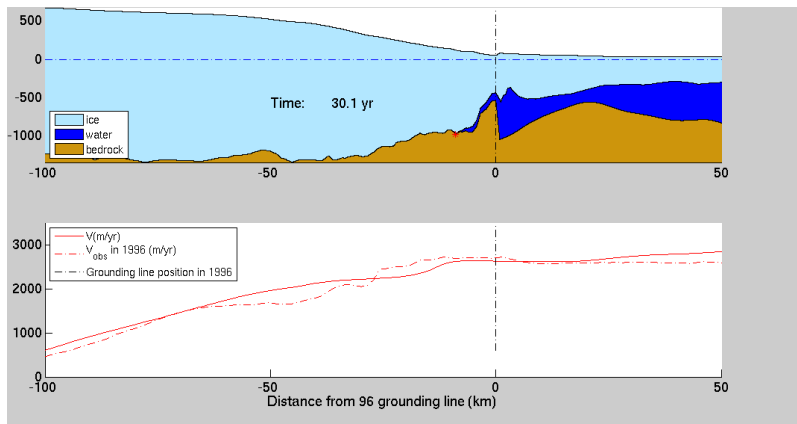
Diagnostic Models
Inversion
Parallel Computing
Rifting/Faulting
Higher-order, Full-Stokes
Anisotropic Adaptation
Prognostic Models
Thermal Analysis
Sensitivity Analysis
Ice Thickness Assimilation
3D Hydrostatic Grounding Line Migration
Hydrology

Ice/Atmosphere Interaction

What ISSM cannot do

Ice flow models
Basal conditions
Inversion and data assimilation
Ice/atmosphere interactions
Ice/ocean interactions
Other capabilities
Numerics

Conclusions



Capabilities

3D Hydrostatic grounding line migration

Introduction

Capabilities

Diagnostic Models
Inversion
Parallel Computing
Rifting/Faulting
Higher-order, Full-Stokes
Anisotropic Adaptation
Prognostic Models
Thermal Analysis
Sensitivity Analysis
Ice Thickness Assimilation

3D Hydrostatic Grounding Line Migration

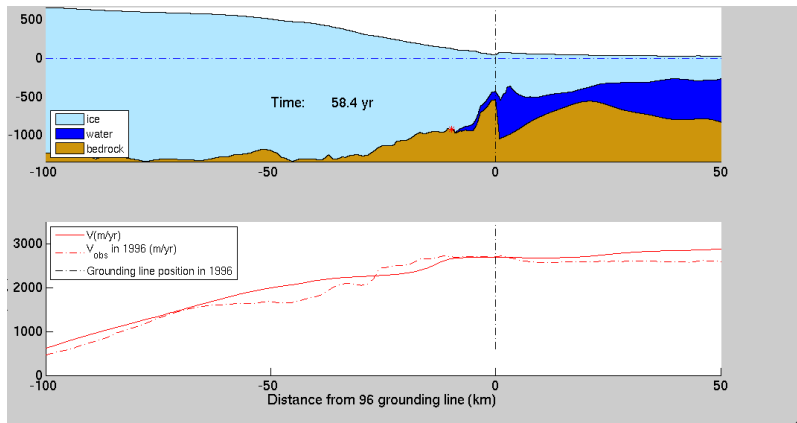
Hydrology

Ice/Atmosphere Interaction

What ISSM cannot do

Ice flow models
Basal conditions
Inversion and data assimilation
Ice/atmosphere interactions
Ice/ocean interactions
Other capabilities
Numerics

Conclusions



Capabilities

Introduction

Capabilities

Diagnostic Models

Inversion

Parallel Computing

Rifting/Faulting

Higher-order, Full-Stokes

Anisotropic Adaptation

Prognostic Models

Thermal Analysis

Sensitivity Analysis

Ice Thickness Assimilation

3D Hydrostatic Grounding Line Migration

Hydrology

Ice/Atmosphere Interaction

What ISSM cannot do

Ice flow models

Basal conditions

Inversion and data assimilation

Ice/atmosphere interactions

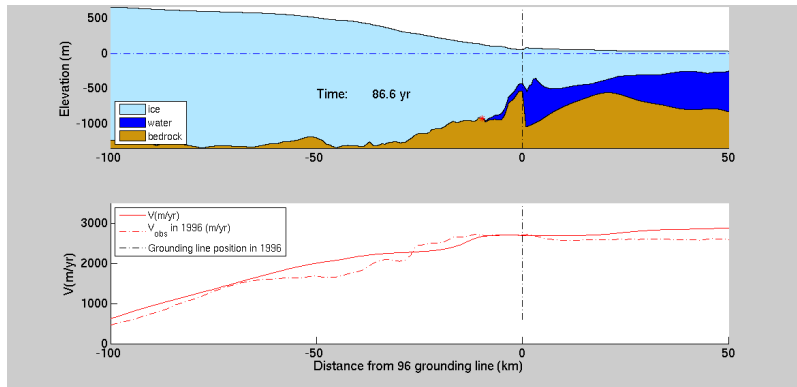
Ice/ocean interactions

Other capabilities

Numerics

Conclusions

3D Hydrostatic grounding line migration



Capabilities

3D Hydrostatic grounding line migration

Introduction

Capabilities

Diagnostic Models

Inversion

Parallel Computing

Rifting/Faulting

Higher-order, Full-Stokes

Anisotropic Adaptation

Prognostic Models

Thermal Analysis

Sensitivity Analysis

Ice Thickness Assimilation

3D Hydrostatic Grounding
Line Migration

Hydrology

Ice/Atmosphere
Interaction

What ISSM cannot do

Ice flow models

Basal conditions

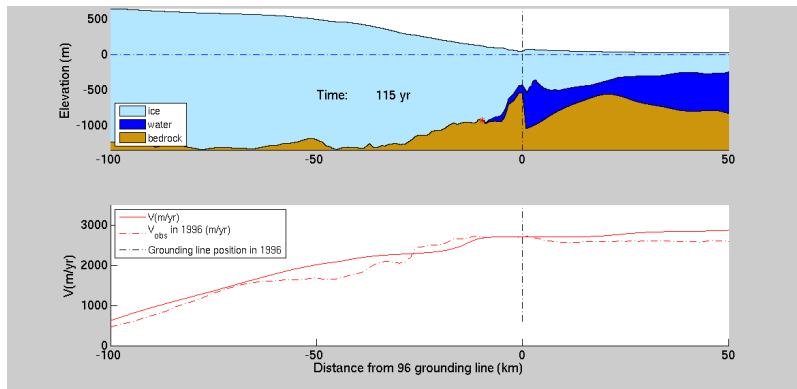
Inversion and data
assimilationIce/atmosphere
interactions

Ice/ocean interactions

Other capabilities

Numerics

Conclusions



Capabilities

3D Hydrostatic grounding line migration

Introduction

Capabilities

Diagnostic Models

Inversion

Parallel Computing

Rifting/Faulting

Higher-order, Full-Stokes

Anisotropic Adaptation

Prognostic Models

Thermal Analysis

Sensitivity Analysis

Ice Thickness Assimilation

3D Hydrostatic Grounding Line Migration

Hydrology

Ice/Atmosphere Interaction

What ISSM cannot do

Ice flow models

Basal conditions

Inversion and data assimilation

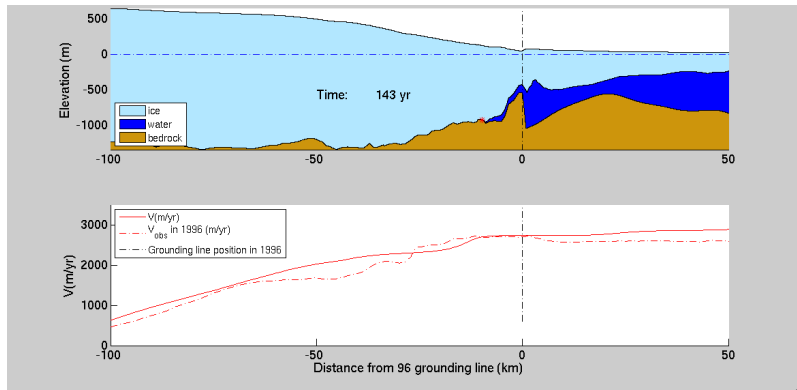
Ice/atmosphere interactions

Ice/ocean interactions

Other capabilities

Numerics

Conclusions



Capabilities

Introduction

Capabilities

Diagnostic Models

Inversion

Parallel Computing

Rifting/Faulting

Higher-order, Full-Stokes

Anisotropic Adaptation

Prognostic Models

Thermal Analysis

Sensitivity Analysis

Ice Thickness Assimilation

3D Hydrostatic Grounding Line Migration

Hydrology

Ice/Atmosphere Interaction

What ISSM cannot do

Ice flow models

Basal conditions

Inversion and data assimilation

Ice/atmosphere interactions

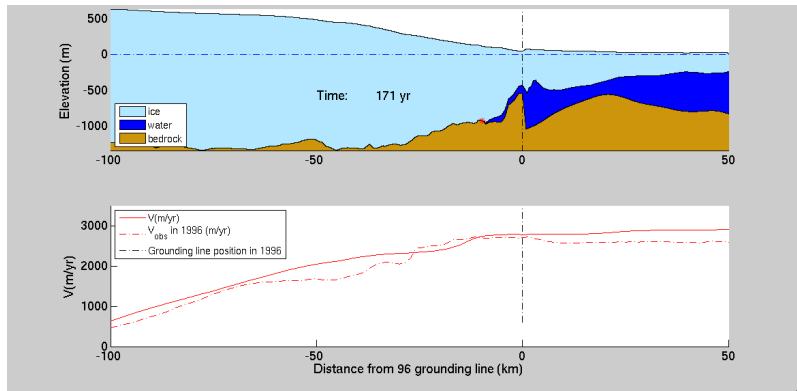
Ice/ocean interactions

Other capabilities

Numerics

Conclusions

3D Hydrostatic grounding line migration



Capabilities

3D Hydrostatic grounding line migration

Introduction

Capabilities

Diagnostic Models

Inversion

Parallel Computing

Rifting/Faulting

Higher-order, Full-Stokes

Anisotropic Adaptation

Prognostic Models

Thermal Analysis

Sensitivity Analysis

Ice Thickness Assimilation

3D Hydrostatic Grounding Line Migration

Hydrology

Ice/Atmosphere Interaction

What ISSM cannot do

Ice flow models

Basal conditions

Inversion and data assimilation

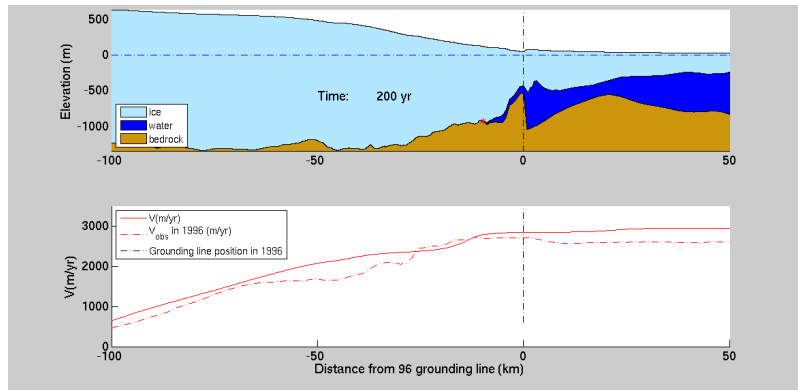
Ice/atmosphere interactions

Ice/ocean interactions

Other capabilities

Numerics

Conclusions



Capabilities

3D Hydrostatic grounding line migration

Introduction

Capabilities

Diagnostic Models

Inversion

Parallel Computing

Rifting/Faulting

Higher-order, Full-Stokes

Anisotropic Adaptation

Prognostic Models

Thermal Analysis

Sensitivity Analysis

Ice Thickness Assimilation

3D Hydrostatic Grounding
Line Migration

Hydrology

Ice/Atmosphere
Interaction

What ISSM cannot do

Ice flow models

Basal conditions

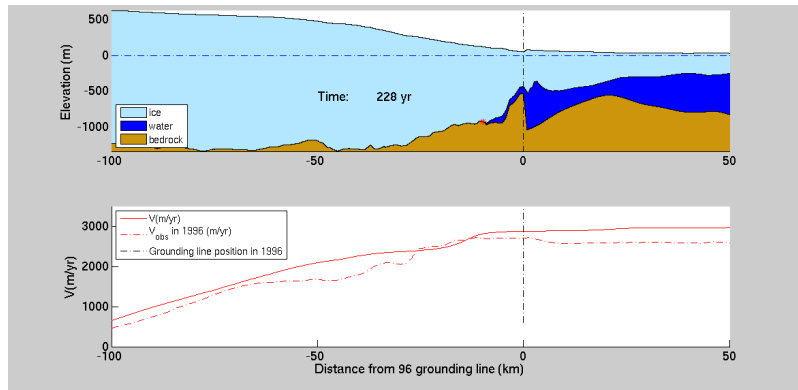
Inversion and data
assimilationIce/atmosphere
interactions

Ice/ocean interactions

Other capabilities

Numerics

Conclusions



Capabilities

3D Hydrostatic grounding line migration

Introduction

Capabilities

Diagnostic Models

Inversion

Parallel Computing

Rifting/Faulting

Higher-order, Full-Stokes

Anisotropic Adaptation

Prognostic Models

Thermal Analysis

Sensitivity Analysis

Ice Thickness Assimilation

3D Hydrostatic Grounding
Line Migration

Hydrology

Ice/Atmosphere
Interaction

What ISSM cannot do

Ice flow models

Basal conditions

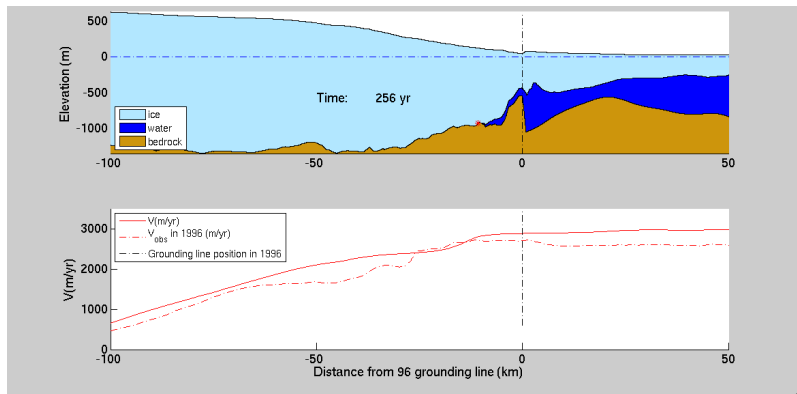
Inversion and data
assimilationIce/atmosphere
interactions

Ice/ocean interactions

Other capabilities

Numerics

Conclusions



Capabilities

3D Hydrostatic grounding line migration

Introduction

Capabilities

Diagnostic Models

Inversion

Parallel Computing

Rifting/Faulting

Higher-order, Full-Stokes

Anisotropic Adaptation

Prognostic Models

Thermal Analysis

Sensitivity Analysis

Ice Thickness Assimilation

3D Hydrostatic Grounding Line Migration

Hydrology

Ice/Atmosphere Interaction

What ISSM cannot do

Ice flow models

Basal conditions

Inversion and data assimilation

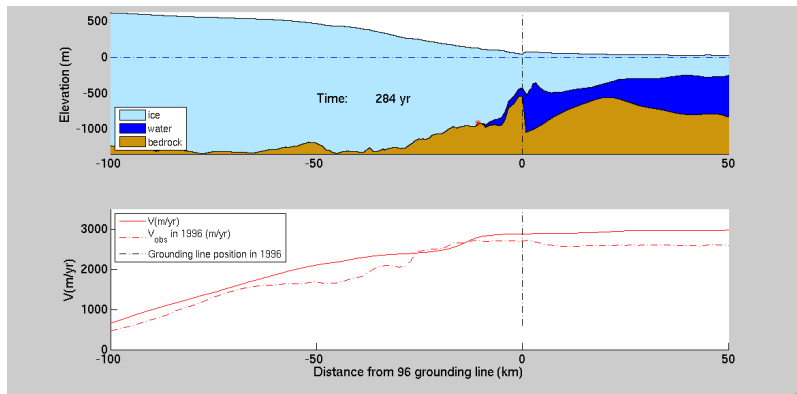
Ice/atmosphere interactions

Ice/ocean interactions

Other capabilities

Numerics

Conclusions



Capabilities

3D Hydrostatic grounding line migration

Introduction

Capabilities

Diagnostic Models

Inversion

Parallel Computing

Rifting/Faulting

Higher-order, Full-Stokes

Anisotropic Adaptation

Prognostic Models

Thermal Analysis

Sensitivity Analysis

Ice Thickness Assimilation

3D Hydrostatic Grounding Line Migration

Hydrology

Ice/Atmosphere Interaction

What ISSM cannot do

Ice flow models

Basal conditions

Inversion and data assimilation

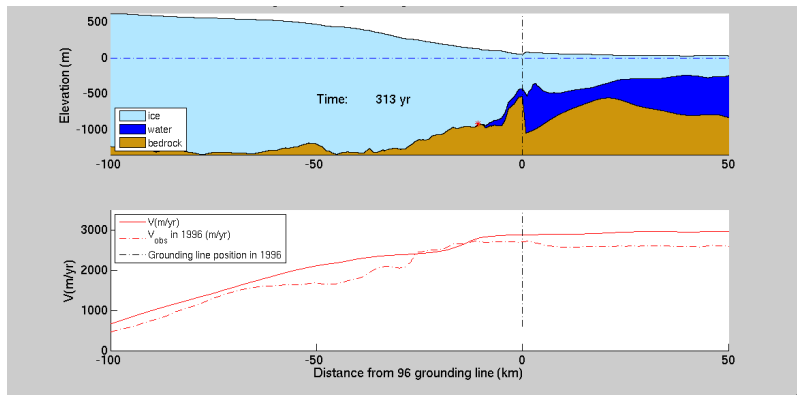
Ice/atmosphere interactions

Ice/ocean interactions

Other capabilities

Numerics

Conclusions



Capabilities

3D Hydrostatic grounding line migration

Introduction

Capabilities

Diagnostic Models

Inversion

Parallel Computing

Rifting/Faulting

Higher-order, Full-Stokes

Anisotropic Adaptation

Prognostic Models

Thermal Analysis

Sensitivity Analysis

Ice Thickness Assimilation

3D Hydrostatic Grounding Line Migration

Hydrology

Ice/Atmosphere Interaction

What ISSM cannot do

Ice flow models

Basal conditions

Inversion and data assimilation

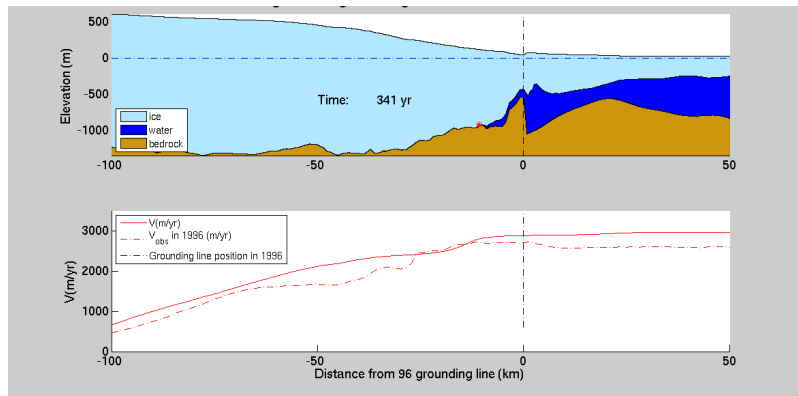
Ice/atmosphere interactions

Ice/ocean interactions

Other capabilities

Numerics

Conclusions



Capabilities

3D Hydrostatic grounding line migration

Introduction

Capabilities

Diagnostic Models

Inversion

Parallel Computing

Rifting/Faulting

Higher-order, Full-Stokes

Anisotropic Adaptation

Prognostic Models

Thermal Analysis

Sensitivity Analysis

Ice Thickness Assimilation

3D Hydrostatic Grounding Line Migration

Hydrology

Ice/Atmosphere Interaction

What ISSM cannot do

Ice flow models

Basal conditions

Inversion and data assimilation

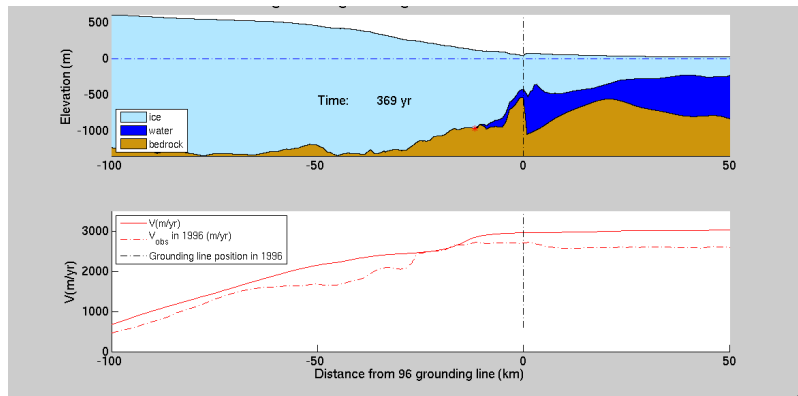
Ice/atmosphere interactions

Ice/ocean interactions

Other capabilities

Numerics

Conclusions



Capabilities

3D Hydrostatic grounding line migration

Introduction

Capabilities

Diagnostic Models

Inversion

Parallel Computing

Rifting/Faulting

Higher-order, Full-Stokes

Anisotropic Adaptation

Prognostic Models

Thermal Analysis

Sensitivity Analysis

Ice Thickness Assimilation

3D Hydrostatic Grounding
Line Migration

Hydrology

Ice/Atmosphere
Interaction

What ISSM cannot do

Ice flow models

Basal conditions

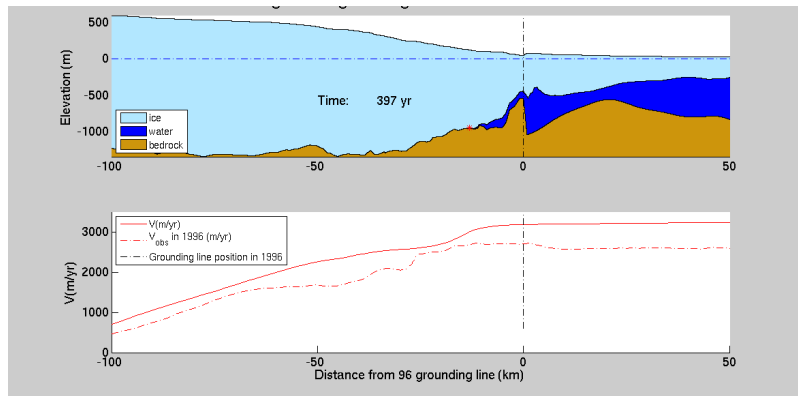
Inversion and data
assimilationIce/atmosphere
interactions

Ice/ocean interactions

Other capabilities

Numerics

Conclusions



Capabilities

Introduction

Capabilities

Diagnostic Models

Inversion

Parallel Computing

Rifting/Faulting

Higher-order, Full-Stokes

Anisotropic Adaptation

Prognostic Models

Thermal Analysis

Sensitivity Analysis

Ice Thickness Assimilation

3D Hydrostatic Grounding Line Migration

Hydrology

Ice/Atmosphere Interaction

What ISSM cannot do

Ice flow models

Basal conditions

Inversion and data assimilation

Ice/atmosphere interactions

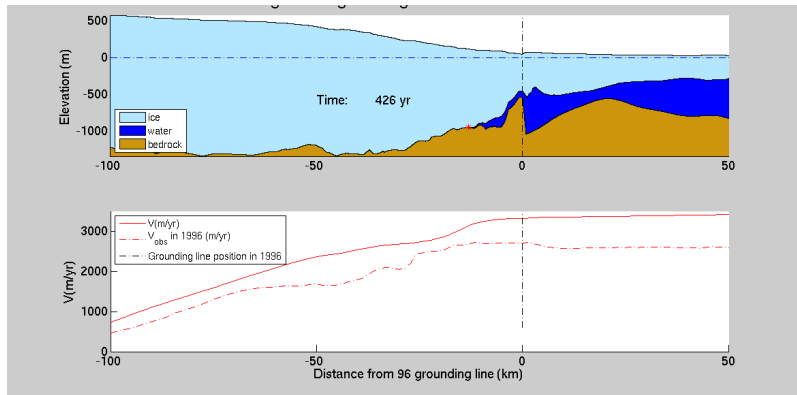
Ice/ocean interactions

Other capabilities

Numerics

Conclusions

3D Hydrostatic grounding line migration



Capabilities

3D Hydrostatic grounding line migration

Introduction

Capabilities

Diagnostic Models

Inversion

Parallel Computing

Rifting/Faulting

Higher-order, Full-Stokes

Anisotropic Adaptation

Prognostic Models

Thermal Analysis

Sensitivity Analysis

Ice Thickness Assimilation

3D Hydrostatic Grounding
Line Migration

Hydrology

Ice/Atmosphere
Interaction

What ISSM cannot do

Ice flow models

Basal conditions

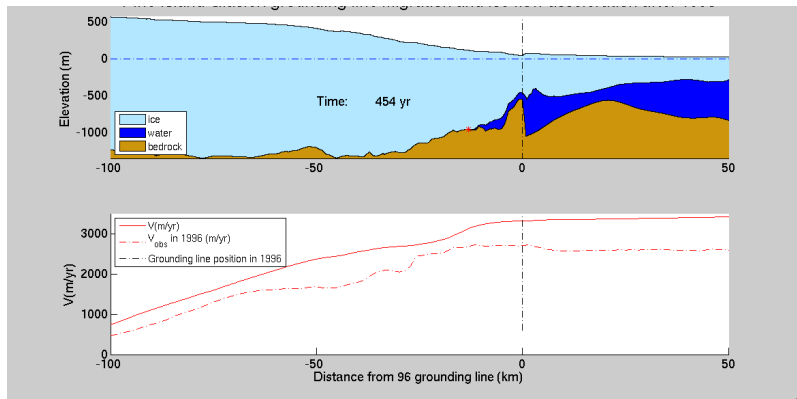
Inversion and data
assimilationIce/atmosphere
interactions

Ice/ocean interactions

Other capabilities

Numerics

Conclusions



Capabilities

3D Hydrostatic grounding line migration

Introduction

Capabilities

Diagnostic Models

Inversion

Parallel Computing

Rifting/Faulting

Higher-order, Full-Stokes

Anisotropic Adaptation

Prognostic Models

Thermal Analysis

Sensitivity Analysis

Ice Thickness Assimilation

3D Hydrostatic Grounding
Line Migration

Hydrology

Ice/Atmosphere
Interaction

What ISSM cannot do

Ice flow models

Basal conditions

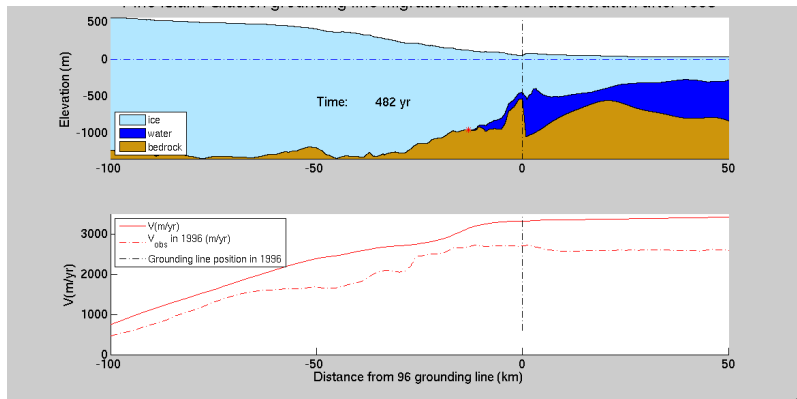
Inversion and data
assimilationIce/atmosphere
interactions

Ice/ocean interactions

Other capabilities

Numerics

Conclusions



Capabilities

3D Hydrostatic grounding line migration

Introduction

Capabilities

Diagnostic Models

Inversion

Parallel Computing

Rifting/Faulting

Higher-order, Full-Stokes

Anisotropic Adaptation

Prognostic Models

Thermal Analysis

Sensitivity Analysis

Ice Thickness Assimilation

3D Hydrostatic Grounding
Line Migration

Hydrology

Ice/Atmosphere
Interaction

What ISSM cannot do

Ice flow models

Basal conditions

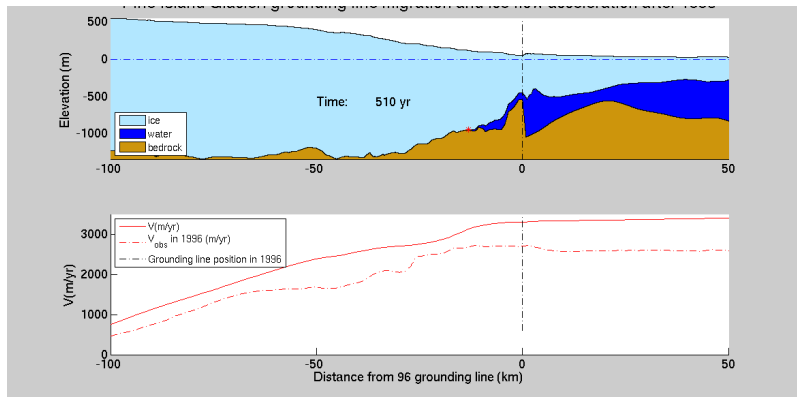
Inversion and data
assimilationIce/atmosphere
interactions

Ice/ocean interactions

Other capabilities

Numerics

Conclusions



Capabilities

3D Hydrostatic grounding line migration

Introduction

Capabilities

Diagnostic Models

Inversion

Parallel Computing

Rifting/Faulting

Higher-order, Full-Stokes

Anisotropic Adaptation

Prognostic Models

Thermal Analysis

Sensitivity Analysis

Ice Thickness Assimilation

3D Hydrostatic Grounding
Line Migration

Hydrology

Ice/Atmosphere
Interaction

What ISSM cannot do

Ice flow models

Basal conditions

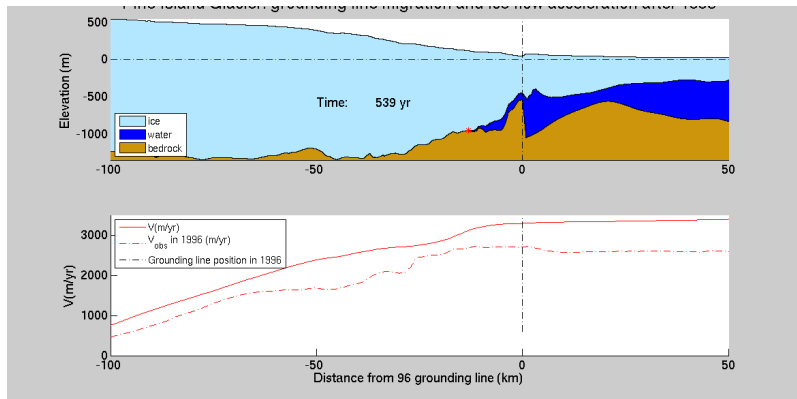
Inversion and data
assimilationIce/atmosphere
interactions

Ice/ocean interactions

Other capabilities

Numerics

Conclusions



Capabilities

3D Hydrostatic grounding line migration

Introduction

Capabilities

Diagnostic Models

Inversion

Parallel Computing

Rifting/Faulting

Higher-order, Full-Stokes

Anisotropic Adaptation

Prognostic Models

Thermal Analysis

Sensitivity Analysis

Ice Thickness Assimilation

3D Hydrostatic Grounding
Line Migration

Hydrology

Ice/Atmosphere
Interaction

What ISSM cannot do

Ice flow models

Basal conditions

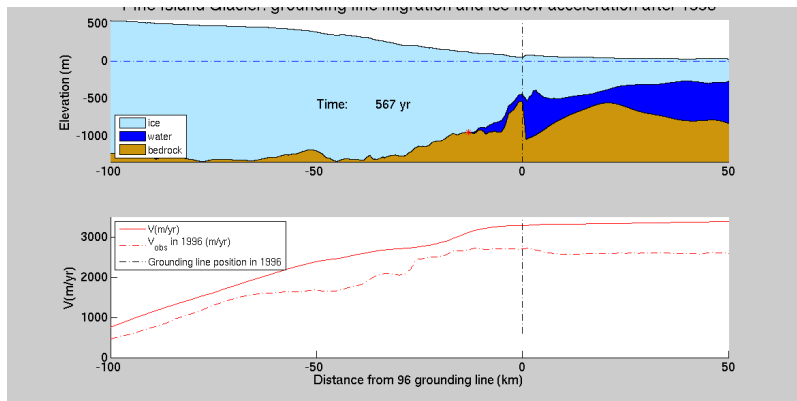
Inversion and data
assimilationIce/atmosphere
interactions

Ice/ocean interactions

Other capabilities

Numerics

Conclusions



Capabilities

3D Hydrostatic grounding line migration

Introduction

Capabilities

Diagnostic Models

Inversion

Parallel Computing

Rifting/Faulting

Higher-order, Full-Stokes

Anisotropic Adaptation

Prognostic Models

Thermal Analysis

Sensitivity Analysis

Ice Thickness Assimilation

3D Hydrostatic Grounding
Line Migration

Hydrology

Ice/Atmosphere
Interaction

What ISSM cannot do

Ice flow models

Basal conditions

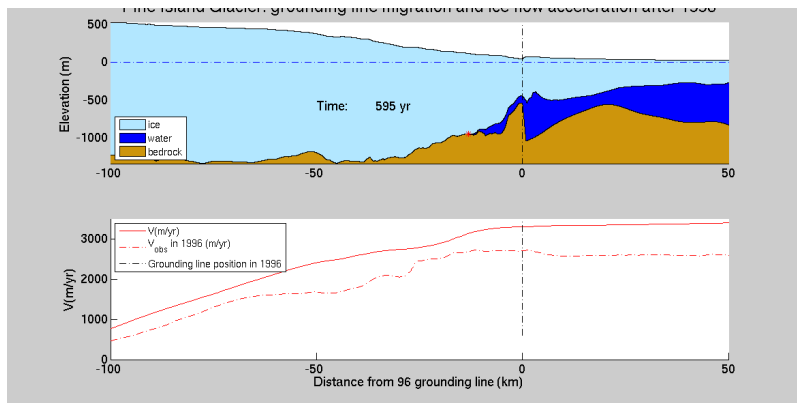
Inversion and data
assimilationIce/atmosphere
interactions

Ice/ocean interactions

Other capabilities

Numerics

Conclusions



Capabilities

3D Hydrostatic grounding line migration

Introduction

Capabilities

Diagnostic Models

Inversion

Parallel Computing

Rifting/Faulting

Higher-order, Full-Stokes

Anisotropic Adaptation

Prognostic Models

Thermal Analysis

Sensitivity Analysis

Ice Thickness Assimilation

3D Hydrostatic Grounding
Line Migration

Hydrology

Ice/Atmosphere
Interaction

What ISSM cannot do

Ice flow models

Basal conditions

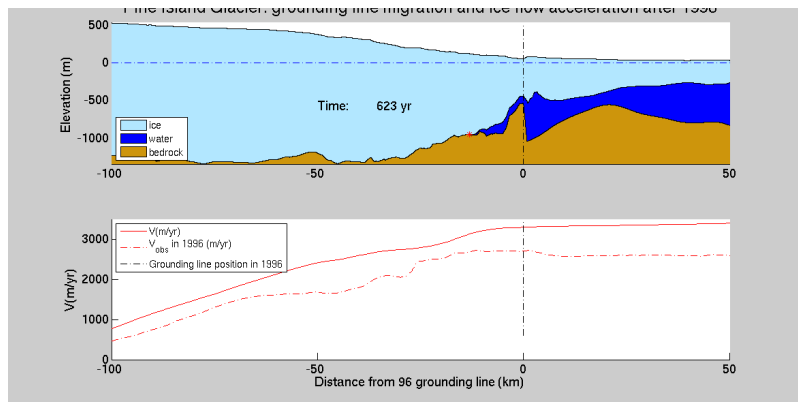
Inversion and data
assimilationIce/atmosphere
interactions

Ice/ocean interactions

Other capabilities

Numerics

Conclusions



Capabilities

3D Hydrostatic grounding line migration

Introduction

Capabilities

Diagnostic Models

Inversion

Parallel Computing

Rifting/Faulting

Higher-order, Full-Stokes

Anisotropic Adaptation

Prognostic Models

Thermal Analysis

Sensitivity Analysis

Ice Thickness Assimilation

3D Hydrostatic Grounding
Line Migration

Hydrology

Ice/Atmosphere
Interaction

What ISSM cannot do

Ice flow models

Basal conditions

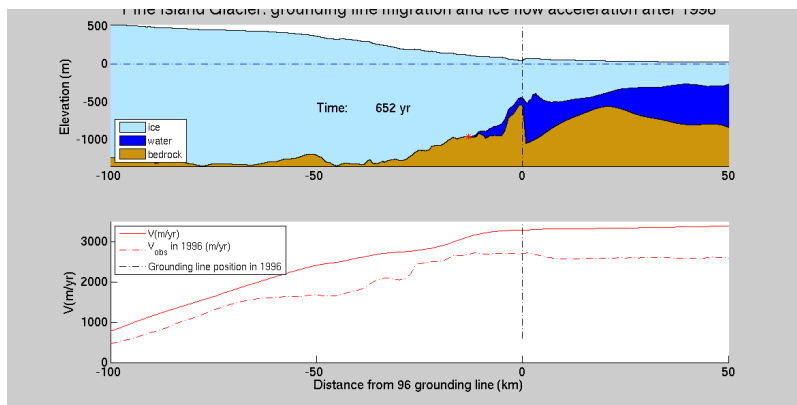
Inversion and data
assimilationIce/atmosphere
interactions

Ice/ocean interactions

Other capabilities

Numerics

Conclusions



Capabilities

3D Hydrostatic grounding line migration

Introduction

Capabilities

Diagnostic Models

Inversion

Parallel Computing

Rifting/Faulting

Higher-order, Full-Stokes

Anisotropic Adaptation

Prognostic Models

Thermal Analysis

Sensitivity Analysis

Ice Thickness Assimilation

3D Hydrostatic Grounding
Line Migration

Hydrology

Ice/Atmosphere
Interaction

What ISSM cannot do

Ice flow models

Basal conditions

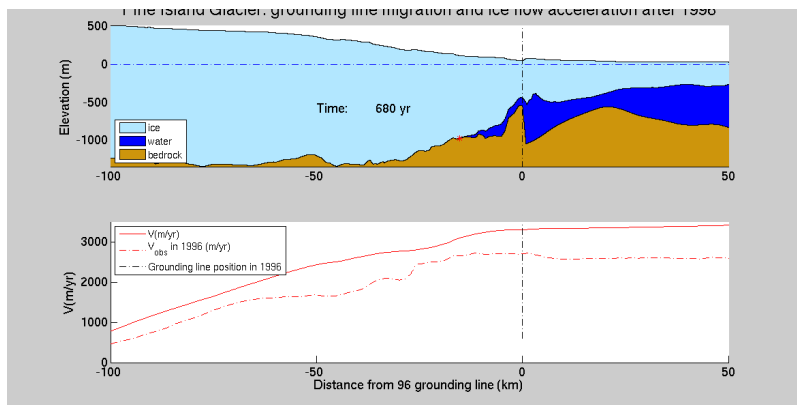
Inversion and data
assimilationIce/atmosphere
interactions

Ice/ocean interactions

Other capabilities

Numerics

Conclusions



Capabilities

3D Hydrostatic grounding line migration

Introduction

Capabilities

Diagnostic Models

Inversion

Parallel Computing

Rifting/Faulting

Higher-order, Full-Stokes

Anisotropic Adaptation

Prognostic Models

Thermal Analysis

Sensitivity Analysis

Ice Thickness Assimilation

3D Hydrostatic Grounding
Line Migration

Hydrology

Ice/Atmosphere
Interaction

What ISSM cannot do

Ice flow models

Basal conditions

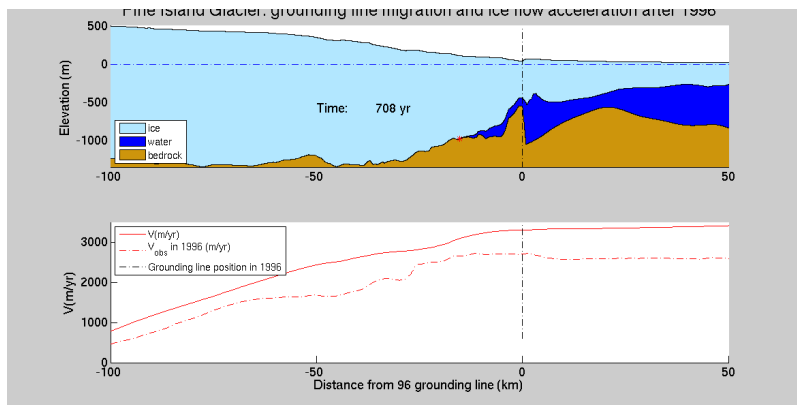
Inversion and data
assimilationIce/atmosphere
interactions

Ice/ocean interactions

Other capabilities

Numerics

Conclusions



Capabilities

3D Hydrostatic grounding line migration

Introduction

Capabilities

Diagnostic Models

Inversion

Parallel Computing

Rifting/Faulting

Higher-order, Full-Stokes

Anisotropic Adaptation

Prognostic Models

Thermal Analysis

Sensitivity Analysis

Ice Thickness Assimilation

3D Hydrostatic Grounding
Line Migration

Hydrology

Ice/Atmosphere
Interaction

What ISSM cannot do

Ice flow models

Basal conditions

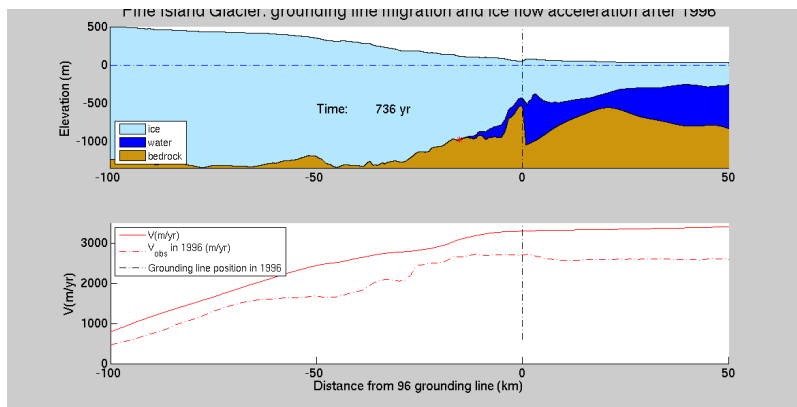
Inversion and data
assimilationIce/atmosphere
interactions

Ice/ocean interactions

Other capabilities

Numerics

Conclusions



Capabilities

3D Hydrostatic grounding line migration

Introduction

Capabilities

Diagnostic Models

Inversion

Parallel Computing

Rifting/Faulting

Higher-order, Full-Stokes

Anisotropic Adaptation

Prognostic Models

Thermal Analysis

Sensitivity Analysis

Ice Thickness Assimilation

3D Hydrostatic Grounding
Line Migration

Hydrology

Ice/Atmosphere
Interaction

What ISSM cannot do

Ice flow models

Basal conditions

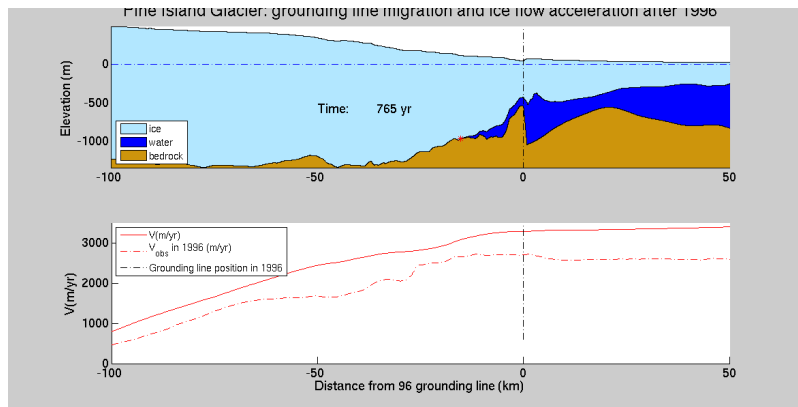
Inversion and data
assimilationIce/atmosphere
interactions

Ice/ocean interactions

Other capabilities

Numerics

Conclusions



Capabilities

3D Hydrostatic grounding line migration

Introduction

Capabilities

Diagnostic Models

Inversion

Parallel Computing

Rifting/Faulting

Higher-order, Full-Stokes

Anisotropic Adaptation

Prognostic Models

Thermal Analysis

Sensitivity Analysis

Ice Thickness Assimilation

3D Hydrostatic Grounding
Line Migration

Hydrology

Ice/Atmosphere
Interaction

What ISSM cannot do

Ice flow models

Basal conditions

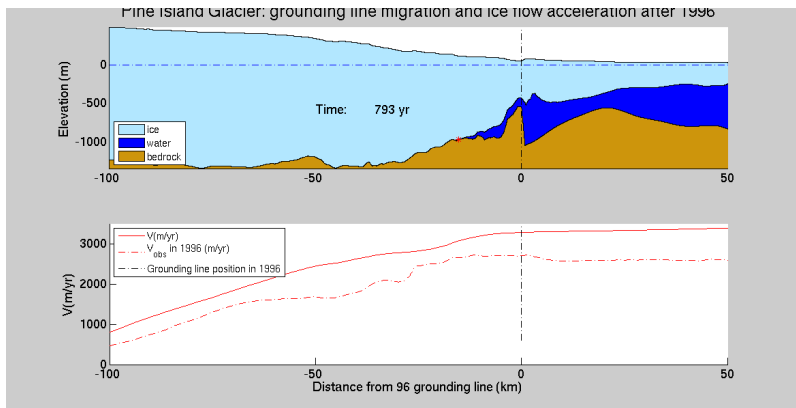
Inversion and data
assimilationIce/atmosphere
interactions

Ice/ocean interactions

Other capabilities

Numerics

Conclusions



Capabilities

3D Hydrostatic grounding line migration

Introduction

Capabilities

Diagnostic Models

Inversion

Parallel Computing

Rifting/Faulting

Higher-order, Full-Stokes

Anisotropic Adaptation

Prognostic Models

Thermal Analysis

Sensitivity Analysis

Ice Thickness Assimilation

3D Hydrostatic Grounding
Line Migration

Hydrology

Ice/Atmosphere
Interaction

What ISSM cannot do

Ice flow models

Basal conditions

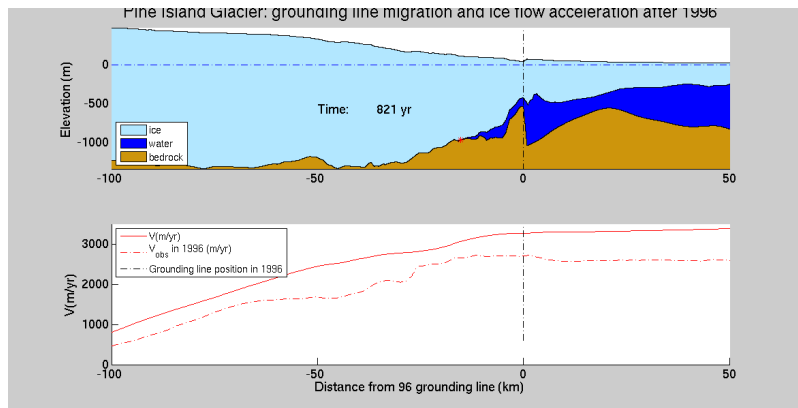
Inversion and data
assimilationIce/atmosphere
interactions

Ice/ocean interactions

Other capabilities

Numerics

Conclusions



Capabilities

3D Hydrostatic grounding line migration

Introduction

Capabilities

Diagnostic Models

Inversion

Parallel Computing

Rifting/Faulting

Higher-order, Full-Stokes

Anisotropic Adaptation

Prognostic Models

Thermal Analysis

Sensitivity Analysis

Ice Thickness Assimilation

3D Hydrostatic Grounding
Line Migration

Hydrology

Ice/Atmosphere
Interaction

What ISSM cannot do

Ice flow models

Basal conditions

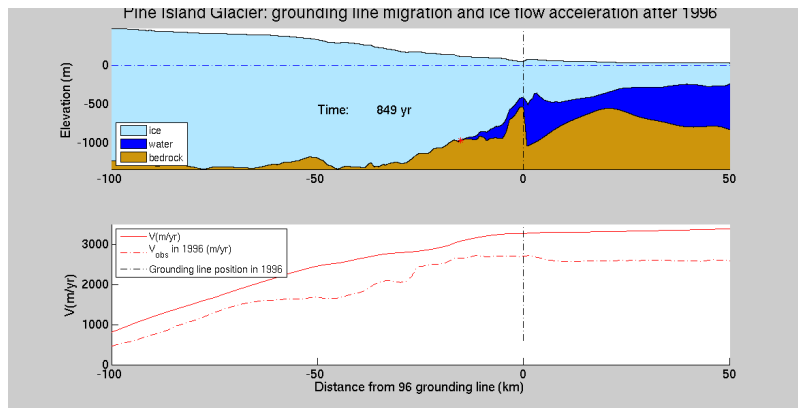
Inversion and data
assimilationIce/atmosphere
interactions

Ice/ocean interactions

Other capabilities

Numerics

Conclusions



Capabilities

3D Hydrostatic grounding line migration

Introduction

Capabilities

Diagnostic Models

Inversion

Parallel Computing

Rifting/Faulting

Higher-order, Full-Stokes

Anisotropic Adaptation

Prognostic Models

Thermal Analysis

Sensitivity Analysis

Ice Thickness Assimilation

3D Hydrostatic Grounding
Line Migration

Hydrology

Ice/Atmosphere
Interaction

What ISSM cannot do

Ice flow models

Basal conditions

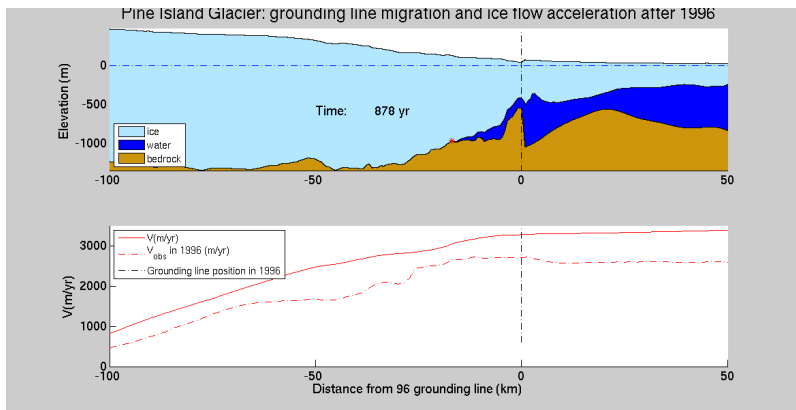
Inversion and data
assimilationIce/atmosphere
interactions

Ice/ocean interactions

Other capabilities

Numerics

Conclusions



Capabilities

3D Hydrostatic grounding line migration

Introduction

Capabilities

Diagnostic Models

Inversion

Parallel Computing

Rifting/Faulting

Higher-order, Full-Stokes

Anisotropic Adaptation

Prognostic Models

Thermal Analysis

Sensitivity Analysis

Ice Thickness Assimilation

3D Hydrostatic Grounding
Line Migration

Hydrology

Ice/Atmosphere
Interaction

What ISSM cannot do

Ice flow models

Basal conditions

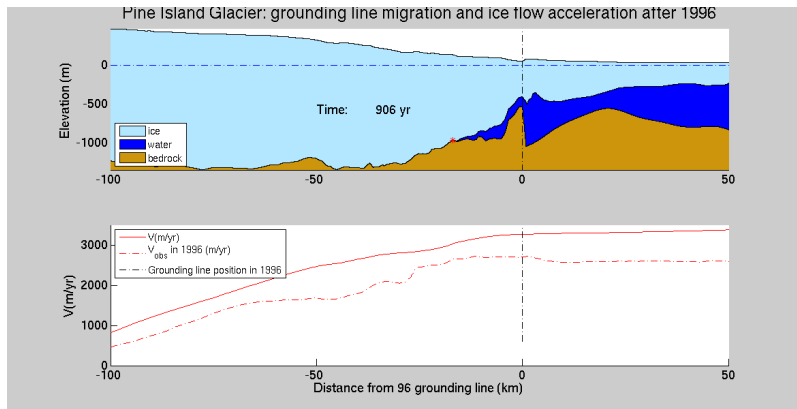
Inversion and data
assimilationIce/atmosphere
interactions

Ice/ocean interactions

Other capabilities

Numerics

Conclusions



Capabilities

Introduction

Capabilities

Diagnostic Models

Inversion

Parallel Computing

Rifting/Faulting

Higher-order, Full-Stokes

Anisotropic Adaptation

Prognostic Models

Thermal Analysis

Sensitivity Analysis

Ice Thickness Assimilation

3D Hydrostatic Grounding
Line Migration

Hydrology

Ice/Atmosphere
Interaction

What ISSM cannot do

Ice flow models

Basal conditions

Inversion and data
assimilationIce/atmosphere
interactions

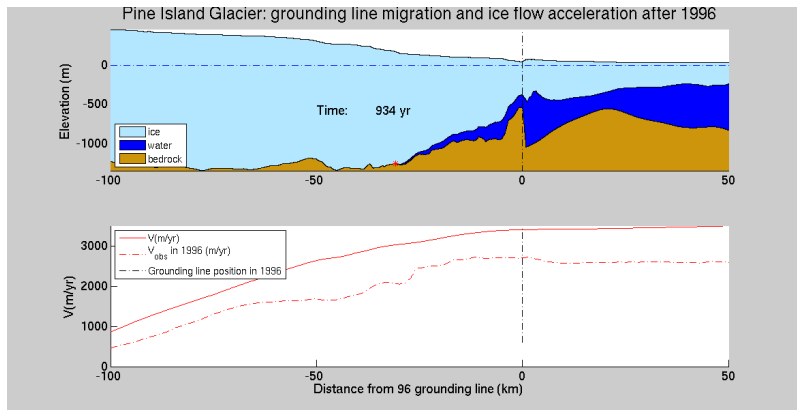
Ice/ocean interactions

Other capabilities

Numerics

Conclusions

3D Hydrostatic grounding line migration



Capabilities

3D Hydrostatic grounding line migration

Introduction

Capabilities

Diagnostic Models

Inversion

Parallel Computing

Rifting/Faulting

Higher-order, Full-Stokes

Anisotropic Adaptation

Prognostic Models

Thermal Analysis

Sensitivity Analysis

Ice Thickness Assimilation

3D Hydrostatic Grounding
Line Migration

Hydrology

Ice/Atmosphere
Interaction

What ISSM cannot do

Ice flow models

Basal conditions

Inversion and data
assimilationIce/atmosphere
interactions

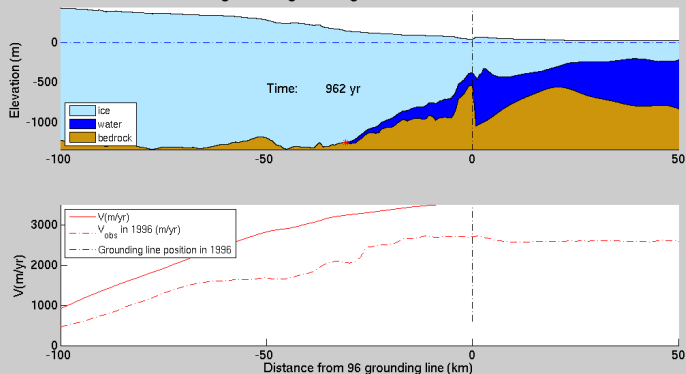
Ice/ocean interactions

Other capabilities

Numerics

Conclusions

Pine Island Glacier: grounding line migration and ice flow acceleration after 1996



Capabilities

3D Hydrostatic grounding line migration

Introduction

Capabilities

Diagnostic Models

Inversion

Parallel Computing

Rifting/Faulting

Higher-order, Full-Stokes

Anisotropic Adaptation

Prognostic Models

Thermal Analysis

Sensitivity Analysis

Ice Thickness Assimilation

3D Hydrostatic Grounding
Line Migration

Hydrology

Ice/Atmosphere
Interaction

What ISSM cannot do

Ice flow models

Basal conditions

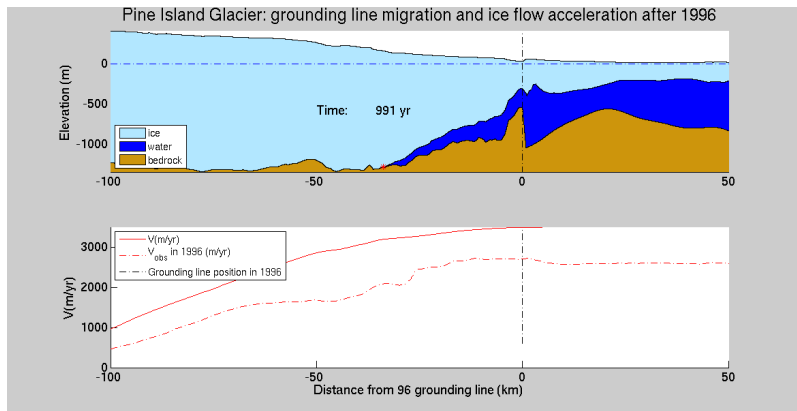
Inversion and data
assimilationIce/atmosphere
interactions

Ice/ocean interactions

Other capabilities

Numerics

Conclusions



Capabilities

Introduction

Capabilities

Diagnostic Models

Inversion

Parallel Computing

Rifting/Faulting

Higher-order, Full-Stokes

Anisotropic Adaptation

Prognostic Models

Thermal Analysis

Sensitivity Analysis

Ice Thickness Assimilation

3D Hydrostatic Grounding
Line Migration

Hydrology

Ice/Atmosphere
Interaction

What ISSM cannot do

Ice flow models

Basal conditions

Inversion and data
assimilationIce/atmosphere
interactions

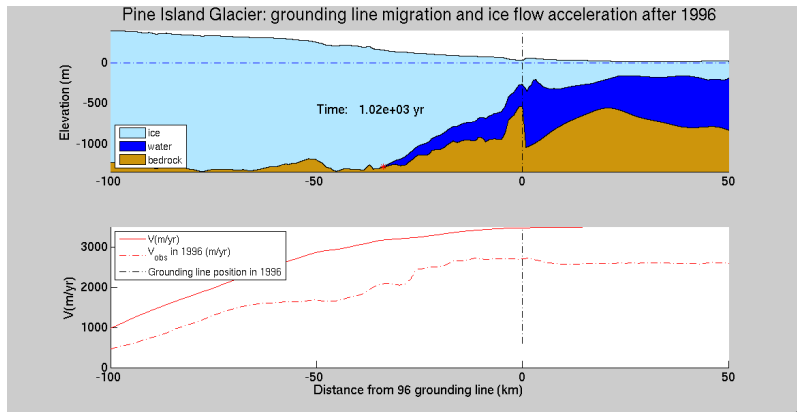
Ice/ocean interactions

Other capabilities

Numerics

Conclusions

3D Hydrostatic grounding line migration



Capabilities

Introduction

Capabilities

Diagnostic Models

Inversion

Parallel Computing

Rifting/Faulting

Higher-order, Full-Stokes

Anisotropic Adaptation

Prognostic Models

Thermal Analysis

Sensitivity Analysis

Ice Thickness Assimilation

3D Hydrostatic Grounding
Line Migration

Hydrology

Ice/Atmosphere
Interaction

What ISSM cannot do

Ice flow models

Basal conditions

Inversion and data
assimilationIce/atmosphere
interactions

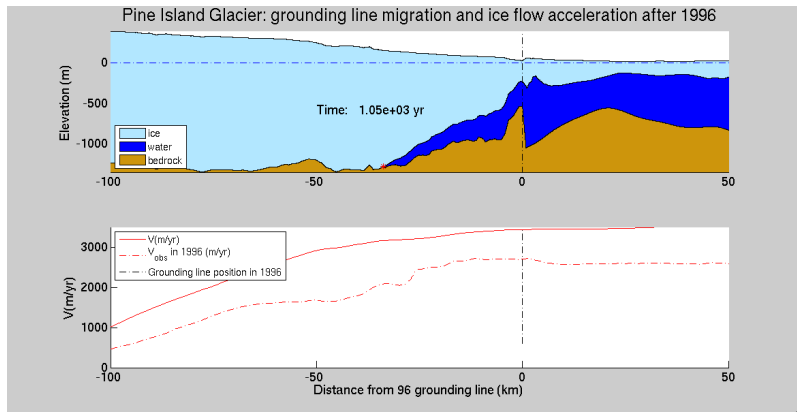
Ice/ocean interactions

Other capabilities

Numerics

Conclusions

3D Hydrostatic grounding line migration



Capabilities

3D Hydrostatic grounding line migration

Introduction

Capabilities

Diagnostic Models

Inversion

Parallel Computing

Rifting/Faulting

Higher-order, Full-Stokes

Anisotropic Adaptation

Prognostic Models

Thermal Analysis

Sensitivity Analysis

Ice Thickness Assimilation

3D Hydrostatic Grounding
Line Migration

Hydrology

Ice/Atmosphere
Interaction

What ISSM cannot do

Ice flow models

Basal conditions

Inversion and data
assimilationIce/atmosphere
interactions

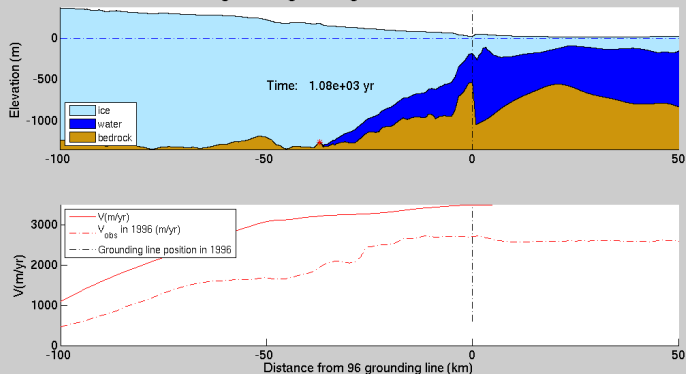
Ice/ocean interactions

Other capabilities

Numerics

Conclusions

Pine Island Glacier: grounding line migration and ice flow acceleration after 1996



Capabilities

3D Hydrostatic grounding line migration

Introduction

Capabilities

Diagnostic Models

Inversion

Parallel Computing

Rifting/Faulting

Higher-order, Full-Stokes

Anisotropic Adaptation

Prognostic Models

Thermal Analysis

Sensitivity Analysis

Ice Thickness Assimilation

3D Hydrostatic Grounding
Line Migration

Hydrology

Ice/Atmosphere
Interaction

What ISSM cannot do

Ice flow models

Basal conditions

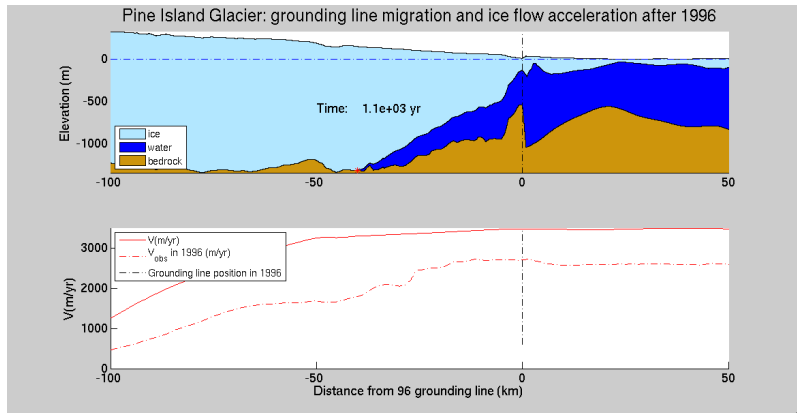
Inversion and data
assimilationIce/atmosphere
interactions

Ice/ocean interactions

Other capabilities

Numerics

Conclusions



Capabilities

3D Hydrostatic grounding line migration

Introduction

Capabilities

Diagnostic Models

Inversion

Parallel Computing

Rifting/Faulting

Higher-order, Full-Stokes

Anisotropic Adaptation

Prognostic Models

Thermal Analysis

Sensitivity Analysis

Ice Thickness Assimilation

3D Hydrostatic Grounding
Line Migration

Hydrology

Ice/Atmosphere
Interaction

What ISSM cannot do

Ice flow models

Basal conditions

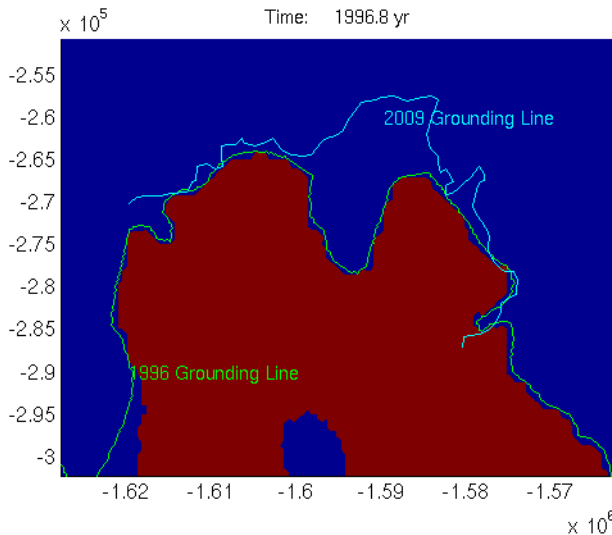
Inversion and data
assimilationIce/atmosphere
interactions

Ice/ocean interactions

Other capabilities

Numerics

Conclusions



Capabilities

3D Hydrostatic grounding line migration

Introduction

Capabilities

Diagnostic Models

Inversion

Parallel Computing

Rifting/Faulting

Higher-order, Full-Stokes

Anisotropic Adaptation

Prognostic Models

Thermal Analysis

Sensitivity Analysis

Ice Thickness Assimilation

3D Hydrostatic Grounding
Line Migration

Hydrology

Ice/Atmosphere
Interaction

What ISSM cannot do

Ice flow models

Basal conditions

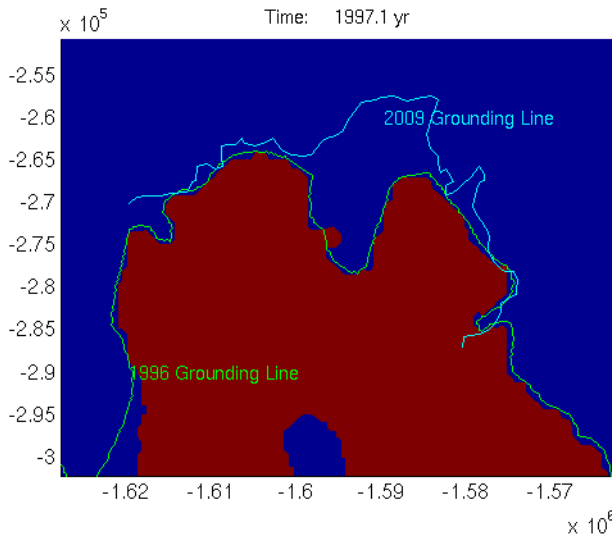
Inversion and data
assimilationIce/atmosphere
interactions

Ice/ocean interactions

Other capabilities

Numerics

Conclusions



Capabilities

Introduction

Capabilities

Diagnostic Models

Inversion

Parallel Computing

Rifting/Faulting

Higher-order, Full-Stokes

Anisotropic Adaptation

Prognostic Models

Thermal Analysis

Sensitivity Analysis

Ice Thickness Assimilation

**3D Hydrostatic Grounding
Line Migration**

Hydrology

Ice/Atmosphere
Interaction

What ISSM cannot do

Ice flow models

Basal conditions

Inversion and data
assimilationIce/atmosphere
interactions

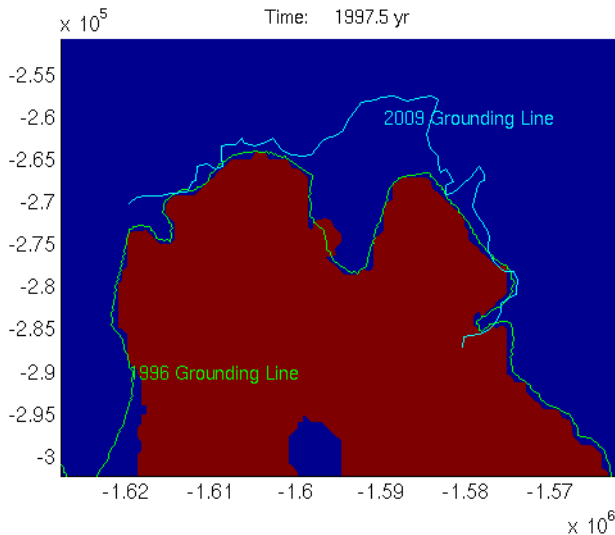
Ice/ocean interactions

Other capabilities

Numerics

Conclusions

3D Hydrostatic grounding line migration



Capabilities

3D Hydrostatic grounding line migration

Introduction

Capabilities

Diagnostic Models

Inversion

Parallel Computing

Rifting/Faulting

Higher-order, Full-Stokes

Anisotropic Adaptation

Prognostic Models

Thermal Analysis

Sensitivity Analysis

Ice Thickness Assimilation

3D Hydrostatic Grounding
Line Migration

Hydrology

Ice/Atmosphere
Interaction

What ISSM cannot do

Ice flow models

Basal conditions

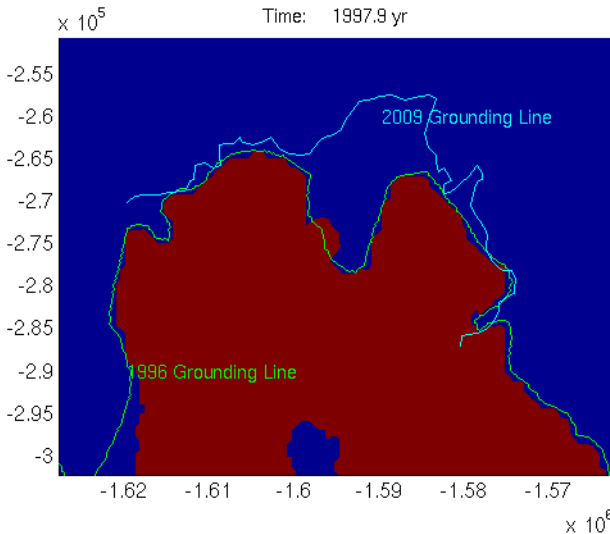
Inversion and data
assimilationIce/atmosphere
interactions

Ice/ocean interactions

Other capabilities

Numerics

Conclusions



Capabilities

3D Hydrostatic grounding line migration

Introduction

Capabilities

Diagnostic Models

Inversion

Parallel Computing

Rifting/Faulting

Higher-order, Full-Stokes

Anisotropic Adaptation

Prognostic Models

Thermal Analysis

Sensitivity Analysis

Ice Thickness Assimilation

3D Hydrostatic Grounding
Line Migration

Hydrology

Ice/Atmosphere
Interaction

What ISSM cannot do

Ice flow models

Basal conditions

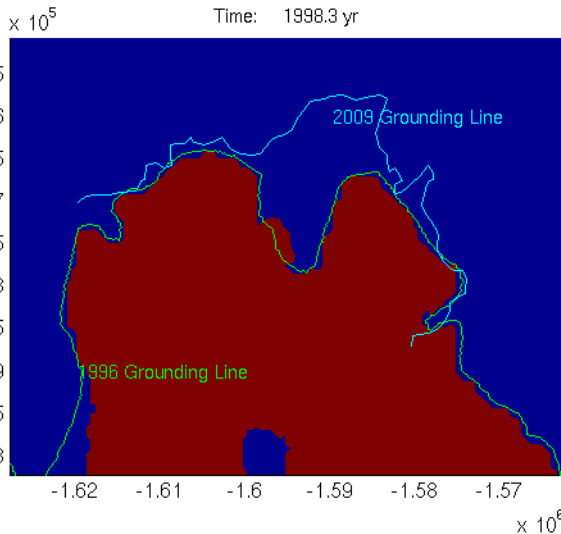
Inversion and data
assimilationIce/atmosphere
interactions

Ice/ocean interactions

Other capabilities

Numerics

Conclusions



Capabilities

Introduction

Capabilities

Diagnostic Models

Inversion

Parallel Computing

Rifting/Faulting

Higher-order, Full-Stokes

Anisotropic Adaptation

Prognostic Models

Thermal Analysis

Sensitivity Analysis

Ice Thickness Assimilation

**3D Hydrostatic Grounding
Line Migration**

Hydrology

Ice/Atmosphere
Interaction

What ISSM cannot do

Ice flow models

Basal conditions

Inversion and data
assimilationIce/atmosphere
interactions

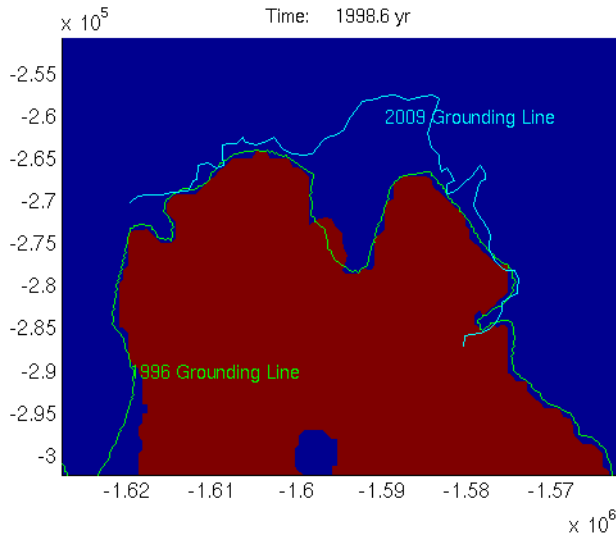
Ice/ocean interactions

Other capabilities

Numerics

Conclusions

3D Hydrostatic grounding line migration



Capabilities

3D Hydrostatic grounding line migration

Introduction

Capabilities

Diagnostic Models

Inversion

Parallel Computing

Rifting/Faulting

Higher-order, Full-Stokes

Anisotropic Adaptation

Prognostic Models

Thermal Analysis

Sensitivity Analysis

Ice Thickness Assimilation

3D Hydrostatic Grounding
Line Migration

Hydrology

Ice/Atmosphere
Interaction

What ISSM cannot do

Ice flow models

Basal conditions

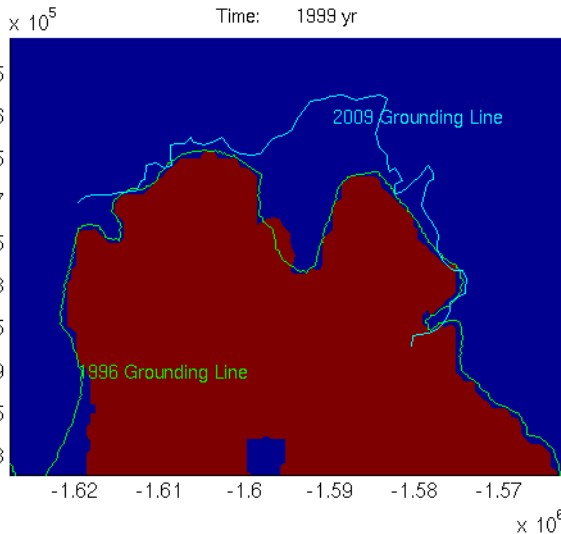
Inversion and data
assimilationIce/atmosphere
interactions

Ice/ocean interactions

Other capabilities

Numerics

Conclusions



Capabilities

Introduction

Capabilities

Diagnostic Models

Inversion

Parallel Computing

Rifting/Faulting

Higher-order, Full-Stokes

Anisotropic Adaptation

Prognostic Models

Thermal Analysis

Sensitivity Analysis

Ice Thickness Assimilation

**3D Hydrostatic Grounding
Line Migration**

Hydrology

Ice/Atmosphere
Interaction

What ISSM cannot do

Ice flow models

Basal conditions

Inversion and data
assimilationIce/atmosphere
interactions

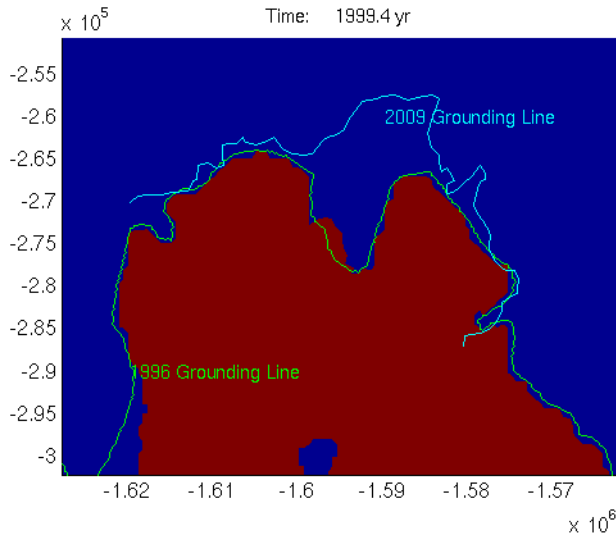
Ice/ocean interactions

Other capabilities

Numerics

Conclusions

3D Hydrostatic grounding line migration



Capabilities

3D Hydrostatic grounding line migration

Introduction

Capabilities

Diagnostic Models

Inversion

Parallel Computing

Rifting/Faulting

Higher-order, Full-Stokes

Anisotropic Adaptation

Prognostic Models

Thermal Analysis

Sensitivity Analysis

Ice Thickness Assimilation

3D Hydrostatic Grounding
Line Migration

Hydrology

Ice/Atmosphere
Interaction

What ISSM cannot do

Ice flow models

Basal conditions

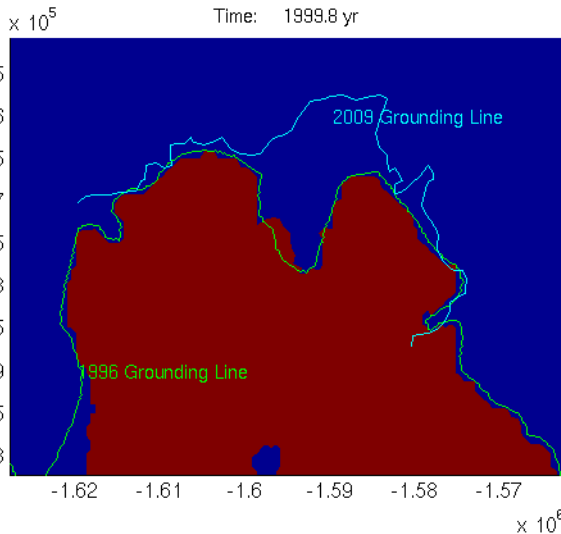
Inversion and data
assimilationIce/atmosphere
interactions

Ice/ocean interactions

Other capabilities

Numerics

Conclusions



Capabilities

3D Hydrostatic grounding line migration

Introduction

Capabilities

Diagnostic Models

Inversion

Parallel Computing

Rifting/Faulting

Higher-order, Full-Stokes

Anisotropic Adaptation

Prognostic Models

Thermal Analysis

Sensitivity Analysis

Ice Thickness Assimilation

3D Hydrostatic Grounding
Line Migration

Hydrology

Ice/Atmosphere
Interaction

What ISSM cannot do

Ice flow models

Basal conditions

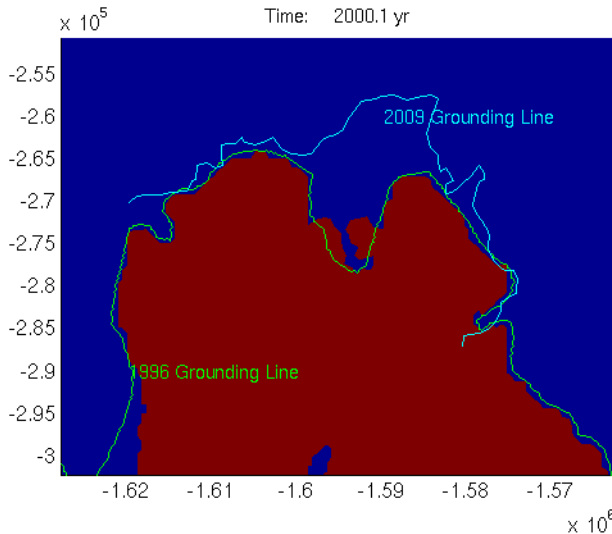
Inversion and data
assimilationIce/atmosphere
interactions

Ice/ocean interactions

Other capabilities

Numerics

Conclusions



Capabilities

3D Hydrostatic grounding line migration

Introduction

Capabilities

Diagnostic Models

Inversion

Parallel Computing

Rifting/Faulting

Higher-order, Full-Stokes

Anisotropic Adaptation

Prognostic Models

Thermal Analysis

Sensitivity Analysis

Ice Thickness Assimilation

3D Hydrostatic Grounding
Line Migration

Hydrology

Ice/Atmosphere
Interaction

What ISSM cannot do

Ice flow models

Basal conditions

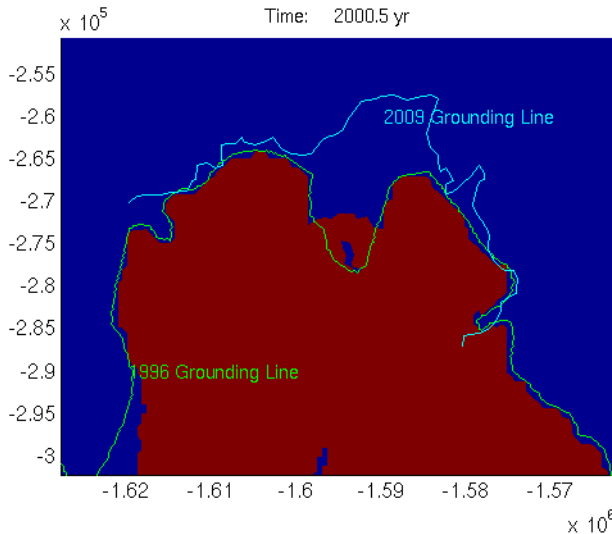
Inversion and data
assimilationIce/atmosphere
interactions

Ice/ocean interactions

Other capabilities

Numerics

Conclusions



Capabilities

3D Hydrostatic grounding line migration

Introduction

Capabilities

Diagnostic Models

Inversion

Parallel Computing

Rifting/Faulting

Higher-order, Full-Stokes

Anisotropic Adaptation

Prognostic Models

Thermal Analysis

Sensitivity Analysis

Ice Thickness Assimilation

3D Hydrostatic Grounding
Line Migration

Hydrology

Ice/Atmosphere
Interaction

What ISSM cannot do

Ice flow models

Basal conditions

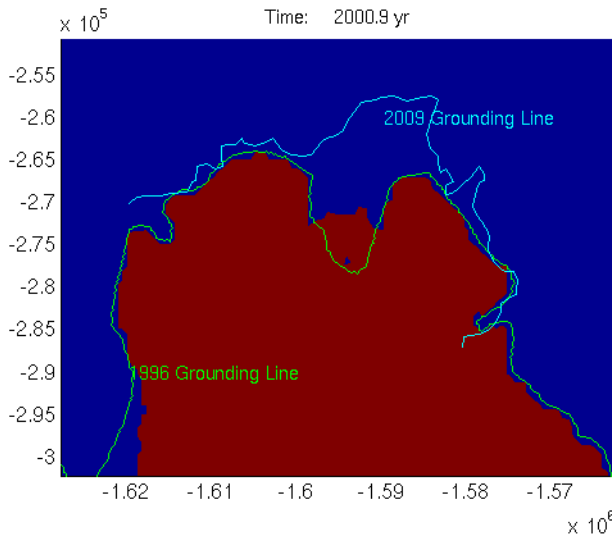
Inversion and data
assimilationIce/atmosphere
interactions

Ice/ocean interactions

Other capabilities

Numerics

Conclusions



Capabilities

3D Hydrostatic grounding line migration

Introduction

Capabilities

Diagnostic Models

Inversion

Parallel Computing

Rifting/Faulting

Higher-order, Full-Stokes

Anisotropic Adaptation

Prognostic Models

Thermal Analysis

Sensitivity Analysis

Ice Thickness Assimilation

3D Hydrostatic Grounding
Line Migration

Hydrology

Ice/Atmosphere
Interaction

What ISSM cannot do

Ice flow models

Basal conditions

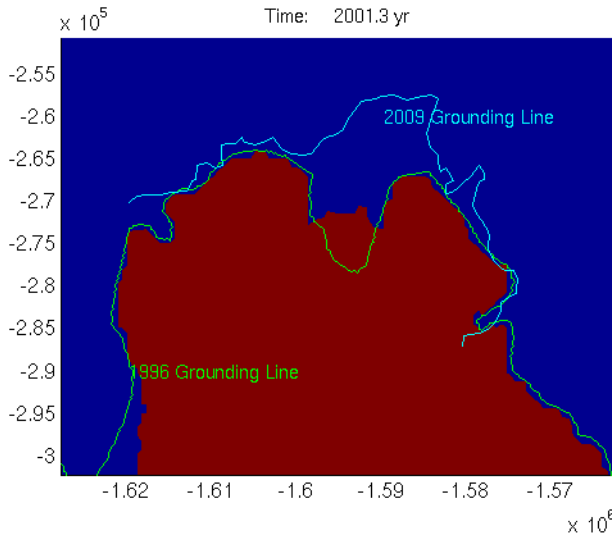
Inversion and data
assimilationIce/atmosphere
interactions

Ice/ocean interactions

Other capabilities

Numerics

Conclusions



Capabilities

3D Hydrostatic grounding line migration

Introduction

Capabilities

Diagnostic Models

Inversion

Parallel Computing

Rifting/Faulting

Higher-order, Full-Stokes

Anisotropic Adaptation

Prognostic Models

Thermal Analysis

Sensitivity Analysis

Ice Thickness Assimilation

3D Hydrostatic Grounding
Line Migration

Hydrology

Ice/Atmosphere
Interaction

What ISSM cannot do

Ice flow models

Basal conditions

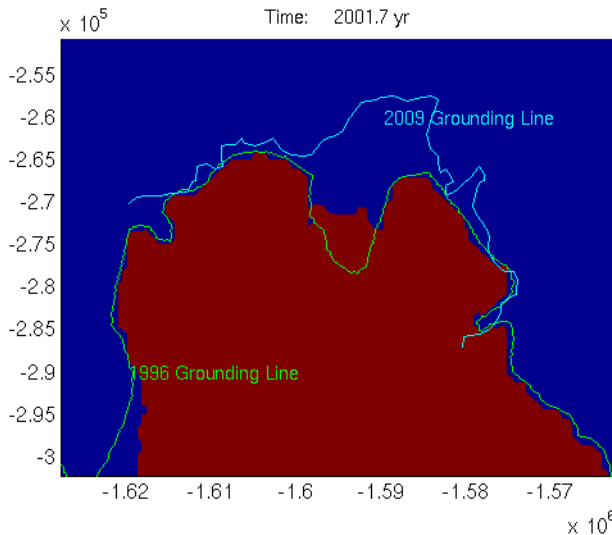
Inversion and data
assimilationIce/atmosphere
interactions

Ice/ocean interactions

Other capabilities

Numerics

Conclusions



Capabilities

3D Hydrostatic grounding line migration

Introduction

Capabilities

Diagnostic Models

Inversion

Parallel Computing

Rifting/Faulting

Higher-order, Full-Stokes

Anisotropic Adaptation

Prognostic Models

Thermal Analysis

Sensitivity Analysis

Ice Thickness Assimilation

3D Hydrostatic Grounding
Line Migration

Hydrology

Ice/Atmosphere
Interaction

What ISSM cannot do

Ice flow models

Basal conditions

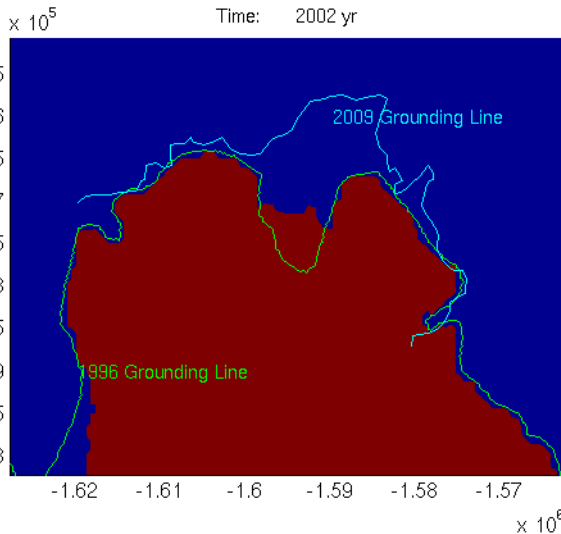
Inversion and data
assimilationIce/atmosphere
interactions

Ice/ocean interactions

Other capabilities

Numerics

Conclusions



Capabilities

3D Hydrostatic grounding line migration

Introduction

Capabilities

Diagnostic Models

Inversion

Parallel Computing

Rifting/Faulting

Higher-order, Full-Stokes

Anisotropic Adaptation

Prognostic Models

Thermal Analysis

Sensitivity Analysis

Ice Thickness Assimilation

3D Hydrostatic Grounding
Line Migration

Hydrology

Ice/Atmosphere
Interaction

What ISSM cannot do

Ice flow models

Basal conditions

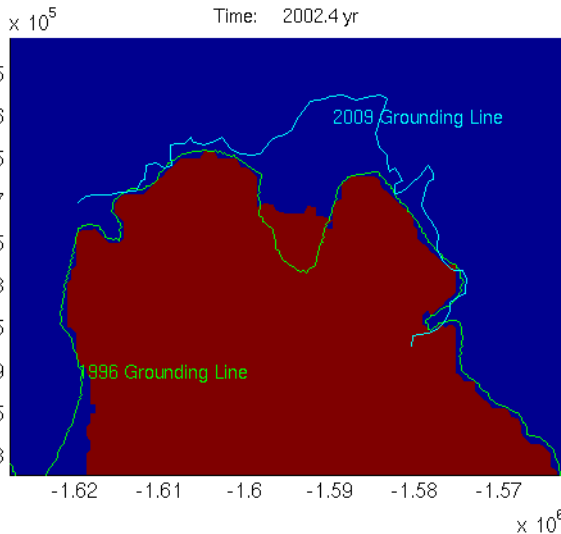
Inversion and data
assimilationIce/atmosphere
interactions

Ice/ocean interactions

Other capabilities

Numerics

Conclusions



Capabilities

3D Hydrostatic grounding line migration

Introduction

Capabilities

Diagnostic Models

Inversion

Parallel Computing

Rifting/Faulting

Higher-order, Full-Stokes

Anisotropic Adaptation

Prognostic Models

Thermal Analysis

Sensitivity Analysis

Ice Thickness Assimilation

3D Hydrostatic Grounding
Line Migration

Hydrology

Ice/Atmosphere
Interaction

What ISSM cannot do

Ice flow models

Basal conditions

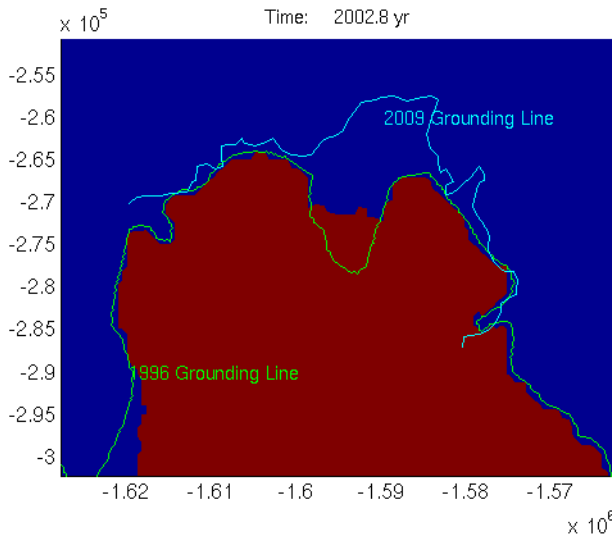
Inversion and data
assimilationIce/atmosphere
interactions

Ice/ocean interactions

Other capabilities

Numerics

Conclusions



Capabilities

3D Hydrostatic grounding line migration

Introduction

Capabilities

Diagnostic Models

Inversion

Parallel Computing

Rifting/Faulting

Higher-order, Full-Stokes

Anisotropic Adaptation

Prognostic Models

Thermal Analysis

Sensitivity Analysis

Ice Thickness Assimilation

3D Hydrostatic Grounding
Line Migration

Hydrology

Ice/Atmosphere
Interaction

What ISSM cannot do

Ice flow models

Basal conditions

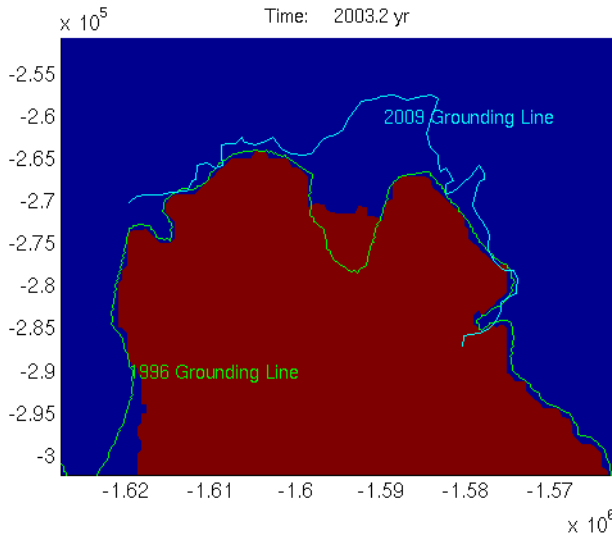
Inversion and data
assimilationIce/atmosphere
interactions

Ice/ocean interactions

Other capabilities

Numerics

Conclusions



Capabilities

3D Hydrostatic grounding line migration

Introduction

Capabilities

Diagnostic Models

Inversion

Parallel Computing

Rifting/Faulting

Higher-order, Full-Stokes

Anisotropic Adaptation

Prognostic Models

Thermal Analysis

Sensitivity Analysis

Ice Thickness Assimilation

3D Hydrostatic Grounding
Line Migration

Hydrology

Ice/Atmosphere
Interaction

What ISSM cannot do

Ice flow models

Basal conditions

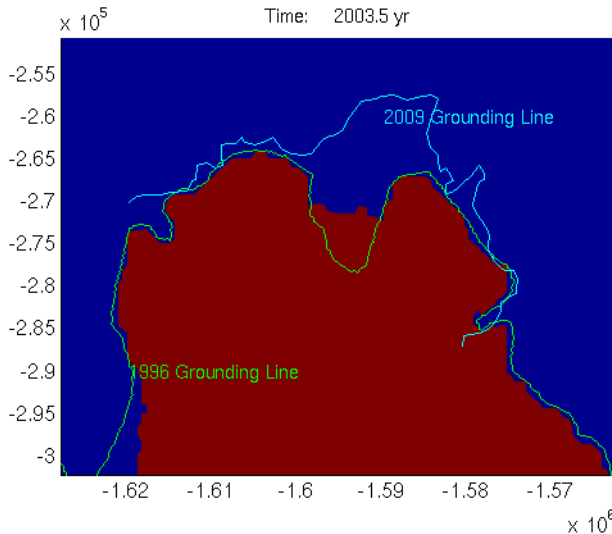
Inversion and data
assimilationIce/atmosphere
interactions

Ice/ocean interactions

Other capabilities

Numerics

Conclusions



Capabilities

3D Hydrostatic grounding line migration

Introduction

Capabilities

Diagnostic Models

Inversion

Parallel Computing

Rifting/Faulting

Higher-order, Full-Stokes

Anisotropic Adaptation

Prognostic Models

Thermal Analysis

Sensitivity Analysis

Ice Thickness Assimilation

3D Hydrostatic Grounding
Line Migration

Hydrology

Ice/Atmosphere
Interaction

What ISSM cannot do

Ice flow models

Basal conditions

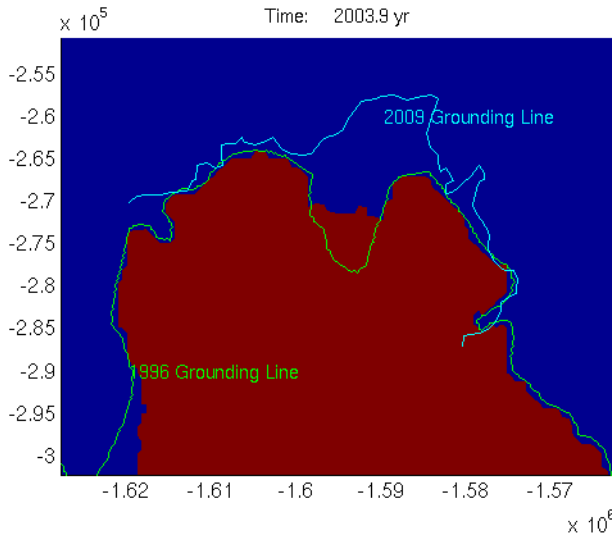
Inversion and data
assimilationIce/atmosphere
interactions

Ice/ocean interactions

Other capabilities

Numerics

Conclusions



Capabilities

3D Hydrostatic grounding line migration

Introduction

Capabilities

Diagnostic Models

Inversion

Parallel Computing

Rifting/Faulting

Higher-order, Full-Stokes

Anisotropic Adaptation

Prognostic Models

Thermal Analysis

Sensitivity Analysis

Ice Thickness Assimilation

3D Hydrostatic Grounding
Line Migration

Hydrology

Ice/Atmosphere
Interaction

What ISSM cannot do

Ice flow models

Basal conditions

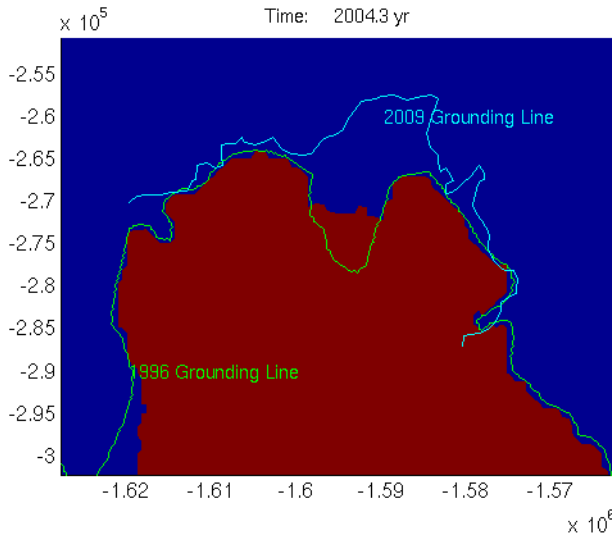
Inversion and data
assimilationIce/atmosphere
interactions

Ice/ocean interactions

Other capabilities

Numerics

Conclusions



Capabilities

3D Hydrostatic grounding line migration

Introduction

Capabilities

Diagnostic Models

Inversion

Parallel Computing

Rifting/Faulting

Higher-order, Full-Stokes

Anisotropic Adaptation

Prognostic Models

Thermal Analysis

Sensitivity Analysis

Ice Thickness Assimilation

3D Hydrostatic Grounding
Line Migration

Hydrology

Ice/Atmosphere
Interaction

What ISSM cannot do

Ice flow models

Basal conditions

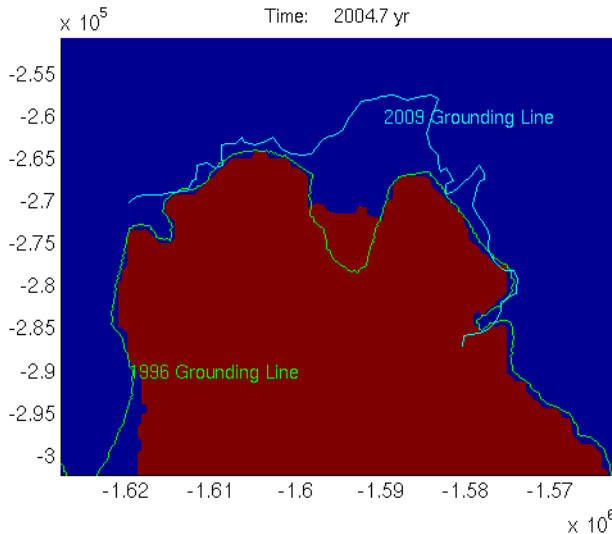
Inversion and data
assimilationIce/atmosphere
interactions

Ice/ocean interactions

Other capabilities

Numerics

Conclusions



Capabilities

3D Hydrostatic grounding line migration

Introduction

Capabilities

Diagnostic Models

Inversion

Parallel Computing

Rifting/Faulting

Higher-order, Full-Stokes

Anisotropic Adaptation

Prognostic Models

Thermal Analysis

Sensitivity Analysis

Ice Thickness Assimilation

3D Hydrostatic Grounding
Line Migration

Hydrology

Ice/Atmosphere
Interaction

What ISSM cannot do

Ice flow models

Basal conditions

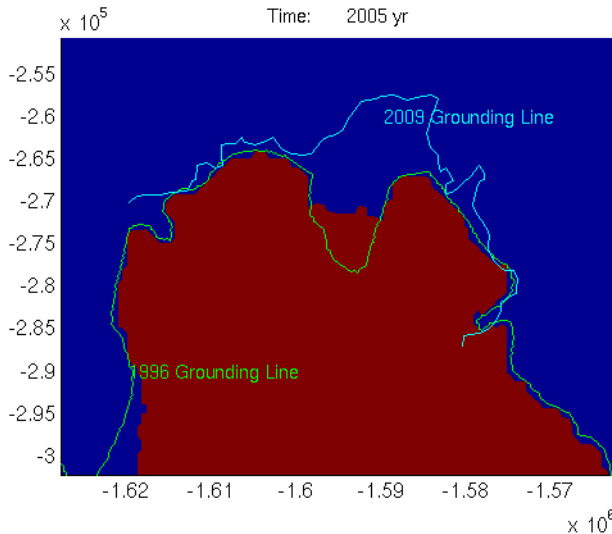
Inversion and data
assimilationIce/atmosphere
interactions

Ice/ocean interactions

Other capabilities

Numerics

Conclusions



Capabilities

Introduction

Capabilities

Diagnostic Models

Inversion

Parallel Computing

Rifting/Faulting

Higher-order, Full-Stokes

Anisotropic Adaptation

Prognostic Models

Thermal Analysis

Sensitivity Analysis

Ice Thickness Assimilation

3D Hydrostatic Grounding
Line Migration

Hydrology

Ice/Atmosphere
Interaction

What ISSM cannot do

Ice flow models

Basal conditions

Inversion and data
assimilationIce/atmosphere
interactions

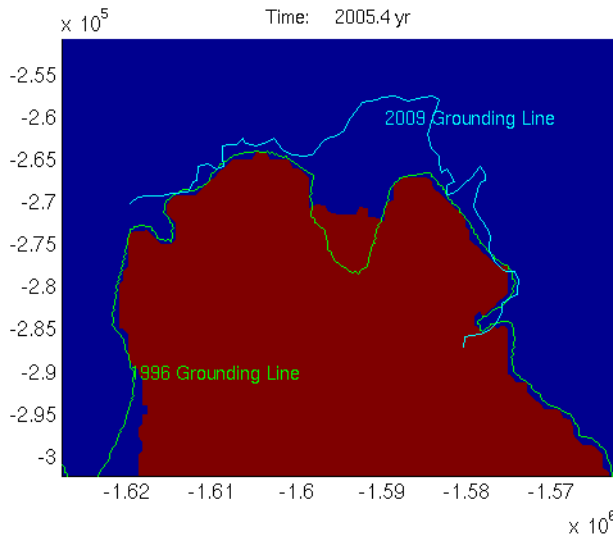
Ice/ocean interactions

Other capabilities

Numerics

Conclusions

3D Hydrostatic grounding line migration



Capabilities

3D Hydrostatic grounding line migration

Introduction

Capabilities

Diagnostic Models

Inversion

Parallel Computing

Rifting/Faulting

Higher-order, Full-Stokes

Anisotropic Adaptation

Prognostic Models

Thermal Analysis

Sensitivity Analysis

Ice Thickness Assimilation

3D Hydrostatic Grounding
Line Migration

Hydrology

Ice/Atmosphere
Interaction

What ISSM cannot do

Ice flow models

Basal conditions

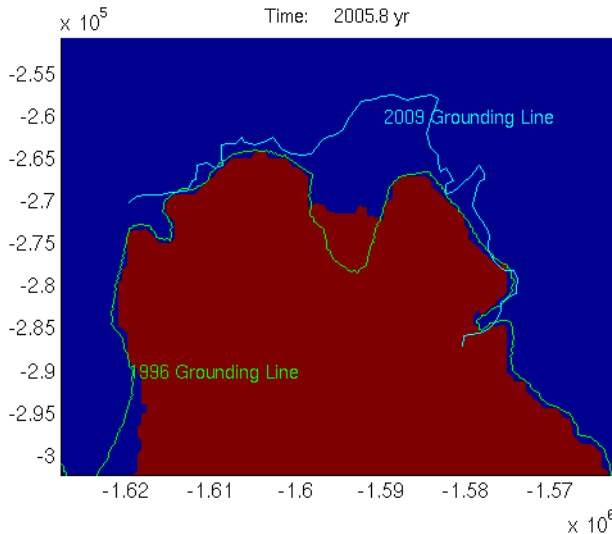
Inversion and data
assimilationIce/atmosphere
interactions

Ice/ocean interactions

Other capabilities

Numerics

Conclusions



Capabilities

3D Hydrostatic grounding line migration

Introduction

Capabilities

Diagnostic Models

Inversion

Parallel Computing

Rifting/Faulting

Higher-order, Full-Stokes

Anisotropic Adaptation

Prognostic Models

Thermal Analysis

Sensitivity Analysis

Ice Thickness Assimilation

3D Hydrostatic Grounding
Line Migration

Hydrology

Ice/Atmosphere
Interaction

What ISSM cannot do

Ice flow models

Basal conditions

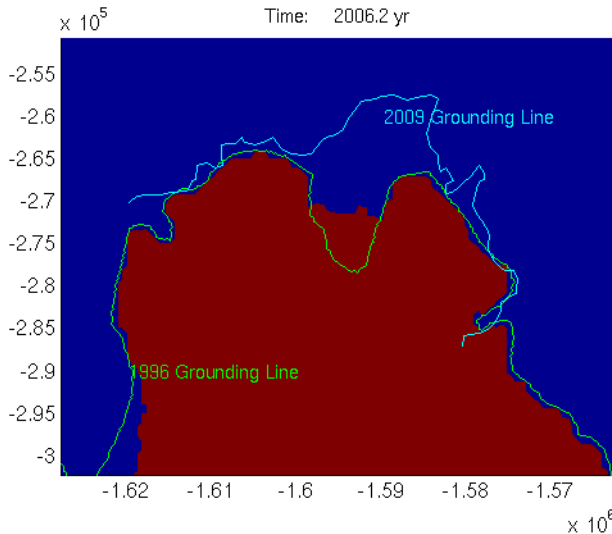
Inversion and data
assimilationIce/atmosphere
interactions

Ice/ocean interactions

Other capabilities

Numerics

Conclusions



Capabilities

3D Hydrostatic grounding line migration

Introduction

Capabilities

Diagnostic Models

Inversion

Parallel Computing

Rifting/Faulting

Higher-order, Full-Stokes

Anisotropic Adaptation

Prognostic Models

Thermal Analysis

Sensitivity Analysis

Ice Thickness Assimilation

3D Hydrostatic Grounding
Line Migration

Hydrology

Ice/Atmosphere
Interaction

What ISSM cannot do

Ice flow models

Basal conditions

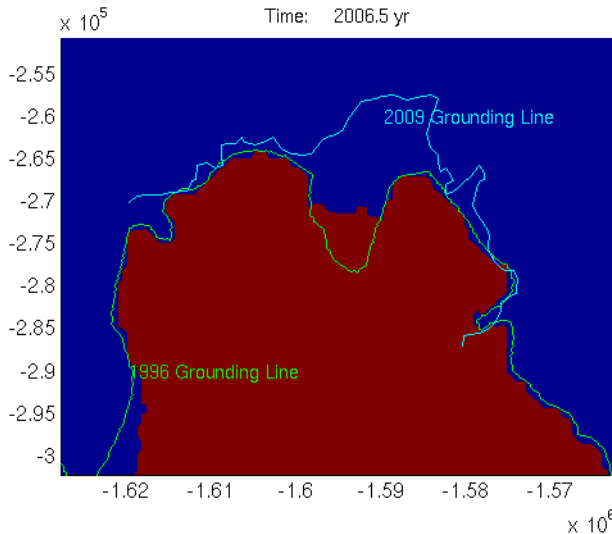
Inversion and data
assimilationIce/atmosphere
interactions

Ice/ocean interactions

Other capabilities

Numerics

Conclusions



Capabilities

3D Hydrostatic grounding line migration

Introduction

Capabilities

Diagnostic Models

Inversion

Parallel Computing

Rifting/Faulting

Higher-order, Full-Stokes

Anisotropic Adaptation

Prognostic Models

Thermal Analysis

Sensitivity Analysis

Ice Thickness Assimilation

3D Hydrostatic Grounding
Line Migration

Hydrology

Ice/Atmosphere
Interaction

What ISSM cannot do

Ice flow models

Basal conditions

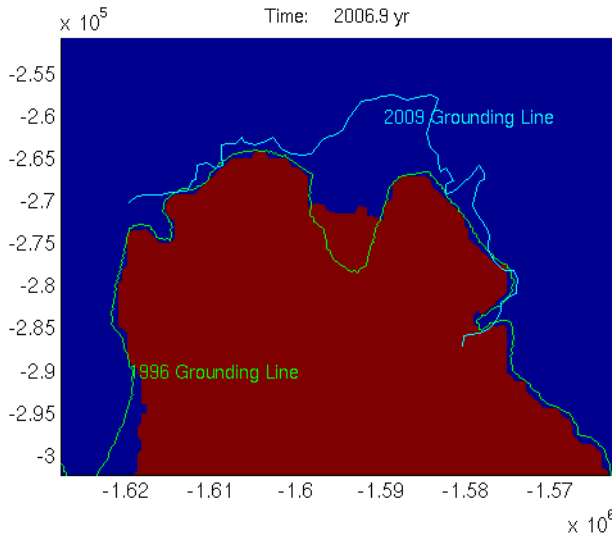
Inversion and data
assimilationIce/atmosphere
interactions

Ice/ocean interactions

Other capabilities

Numerics

Conclusions



Capabilities

3D Hydrostatic grounding line migration

Introduction

Capabilities

Diagnostic Models

Inversion

Parallel Computing

Rifting/Faulting

Higher-order, Full-Stokes

Anisotropic Adaptation

Prognostic Models

Thermal Analysis

Sensitivity Analysis

Ice Thickness Assimilation

3D Hydrostatic Grounding
Line Migration

Hydrology

Ice/Atmosphere
Interaction

What ISSM cannot do

Ice flow models

Basal conditions

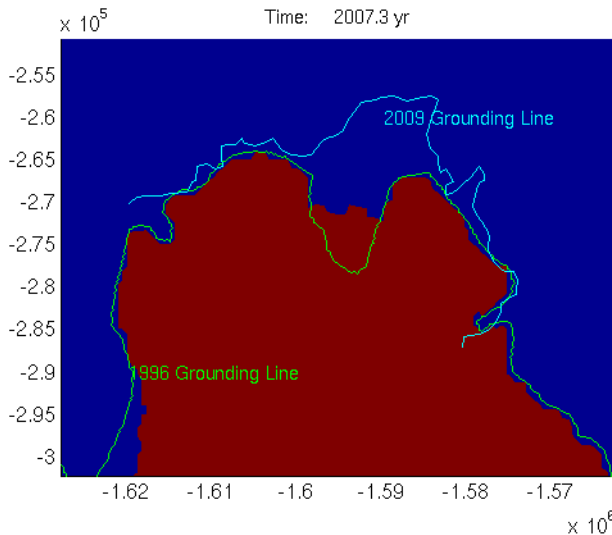
Inversion and data
assimilationIce/atmosphere
interactions

Ice/ocean interactions

Other capabilities

Numerics

Conclusions



Capabilities

3D Hydrostatic grounding line migration

Introduction

Capabilities

Diagnostic Models

Inversion

Parallel Computing

Rifting/Faulting

Higher-order, Full-Stokes

Anisotropic Adaptation

Prognostic Models

Thermal Analysis

Sensitivity Analysis

Ice Thickness Assimilation

3D Hydrostatic Grounding
Line Migration

Hydrology

Ice/Atmosphere
Interaction

What ISSM cannot do

Ice flow models

Basal conditions

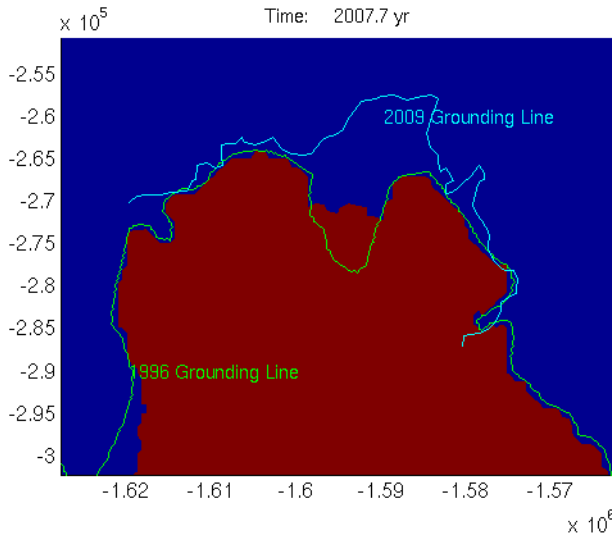
Inversion and data
assimilationIce/atmosphere
interactions

Ice/ocean interactions

Other capabilities

Numerics

Conclusions



Capabilities

3D Hydrostatic grounding line migration

Introduction

Capabilities

Diagnostic Models

Inversion

Parallel Computing

Rifting/Faulting

Higher-order, Full-Stokes

Anisotropic Adaptation

Prognostic Models

Thermal Analysis

Sensitivity Analysis

Ice Thickness Assimilation

3D Hydrostatic Grounding
Line Migration

Hydrology

Ice/Atmosphere
Interaction

What ISSM cannot do

Ice flow models

Basal conditions

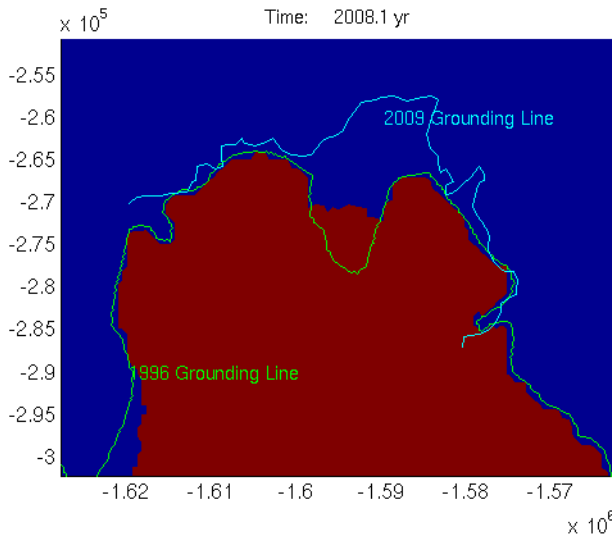
Inversion and data
assimilationIce/atmosphere
interactions

Ice/ocean interactions

Other capabilities

Numerics

Conclusions



Capabilities

3D Hydrostatic grounding line migration

Introduction

Capabilities

Diagnostic Models

Inversion

Parallel Computing

Rifting/Faulting

Higher-order, Full-Stokes

Anisotropic Adaptation

Prognostic Models

Thermal Analysis

Sensitivity Analysis

Ice Thickness Assimilation

3D Hydrostatic Grounding
Line Migration

Hydrology

Ice/Atmosphere
Interaction

What ISSM cannot do

Ice flow models

Basal conditions

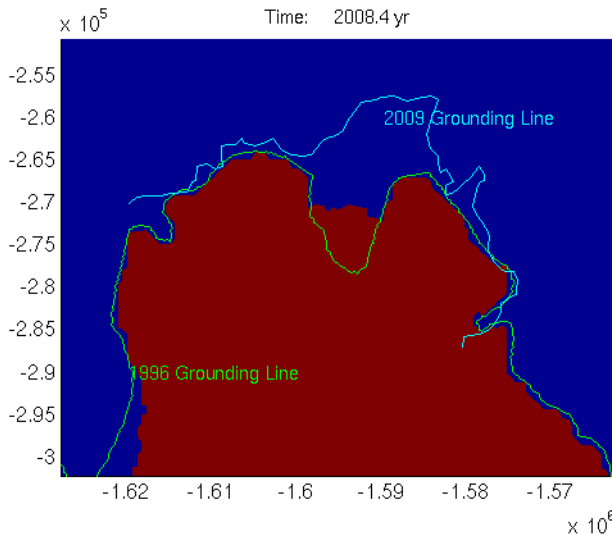
Inversion and data
assimilationIce/atmosphere
interactions

Ice/ocean interactions

Other capabilities

Numerics

Conclusions



Capabilities

Introduction

Capabilities

Diagnostic Models

Inversion

Parallel Computing

Rifting/Faulting

Higher-order, Full-Stokes

Anisotropic Adaptation

Prognostic Models

Thermal Analysis

Sensitivity Analysis

Ice Thickness Assimilation

**3D Hydrostatic Grounding
Line Migration**

Hydrology

Ice/Atmosphere
Interaction

What ISSM cannot do

Ice flow models

Basal conditions

Inversion and data
assimilationIce/atmosphere
interactions

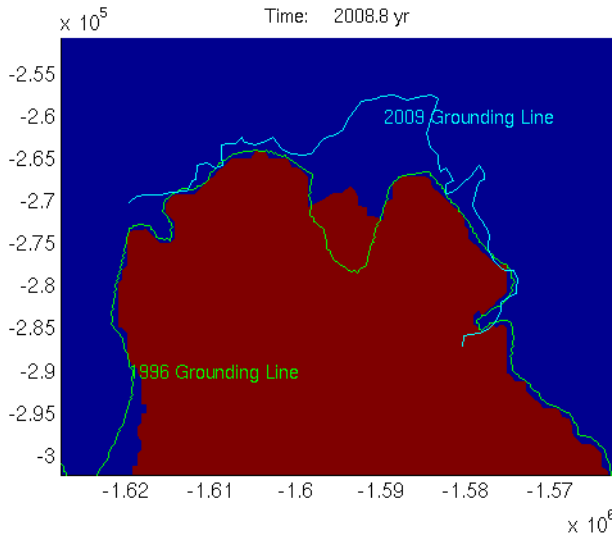
Ice/ocean interactions

Other capabilities

Numerics

Conclusions

3D Hydrostatic grounding line migration



Capabilities

3D Hydrostatic grounding line migration

Introduction

Capabilities

Diagnostic Models

Inversion

Parallel Computing

Rifting/Faulting

Higher-order, Full-Stokes

Anisotropic Adaptation

Prognostic Models

Thermal Analysis

Sensitivity Analysis

Ice Thickness Assimilation

3D Hydrostatic Grounding
Line Migration

Hydrology

Ice/Atmosphere
Interaction

What ISSM cannot do

Ice flow models

Basal conditions

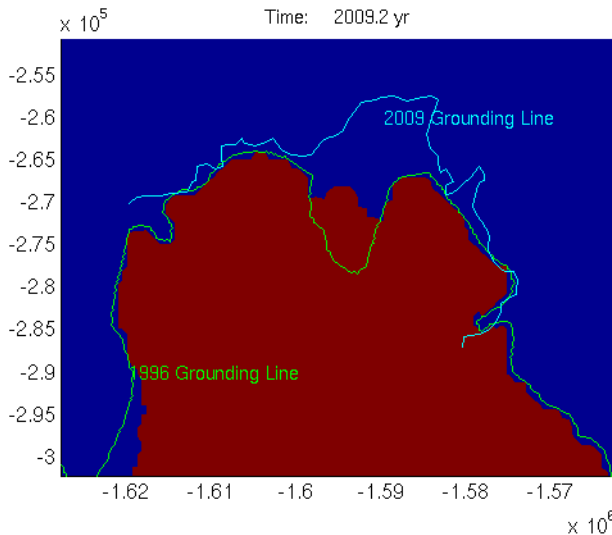
Inversion and data
assimilationIce/atmosphere
interactions

Ice/ocean interactions

Other capabilities

Numerics

Conclusions



Capabilities

3D Hydrostatic grounding line migration

Introduction

Capabilities

Diagnostic Models

Inversion

Parallel Computing

Rifting/Faulting

Higher-order, Full-Stokes

Anisotropic Adaptation

Prognostic Models

Thermal Analysis

Sensitivity Analysis

Ice Thickness Assimilation

3D Hydrostatic Grounding
Line Migration

Hydrology

Ice/Atmosphere
Interaction

What ISSM cannot do

Ice flow models

Basal conditions

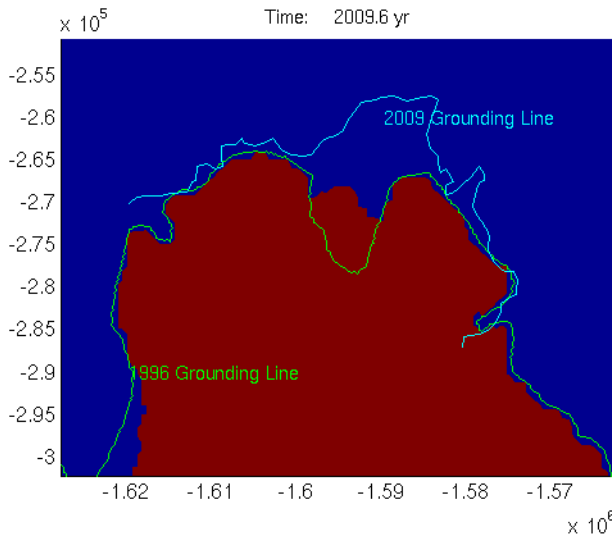
Inversion and data
assimilationIce/atmosphere
interactions

Ice/ocean interactions

Other capabilities

Numerics

Conclusions



Capabilities

3D Hydrostatic grounding line migration

Introduction

Capabilities

Diagnostic Models

Inversion

Parallel Computing

Rifting/Faulting

Higher-order, Full-Stokes

Anisotropic Adaptation

Prognostic Models

Thermal Analysis

Sensitivity Analysis

Ice Thickness Assimilation

3D Hydrostatic Grounding
Line Migration

Hydrology

Ice/Atmosphere
Interaction

What ISSM cannot do

Ice flow models

Basal conditions

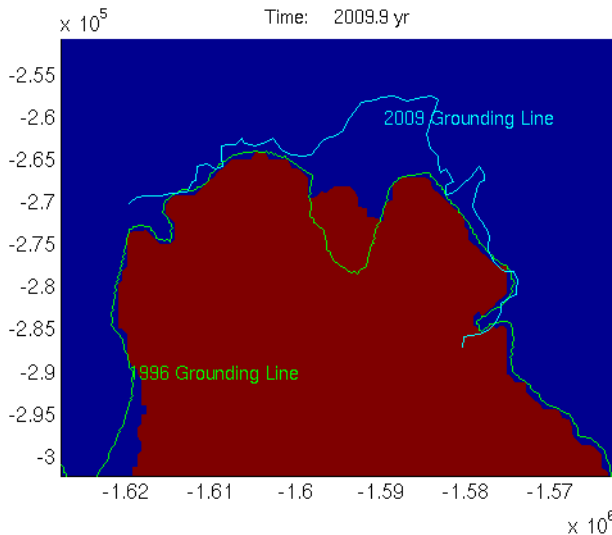
Inversion and data
assimilationIce/atmosphere
interactions

Ice/ocean interactions

Other capabilities

Numerics

Conclusions



Capabilities

3D Hydrostatic grounding line migration

Introduction

Capabilities

Diagnostic Models

Inversion

Parallel Computing

Rifting/Faulting

Higher-order, Full-Stokes

Anisotropic Adaptation

Prognostic Models

Thermal Analysis

Sensitivity Analysis

Ice Thickness Assimilation

3D Hydrostatic Grounding
Line Migration

Hydrology

Ice/Atmosphere
Interaction

What ISSM cannot do

Ice flow models

Basal conditions

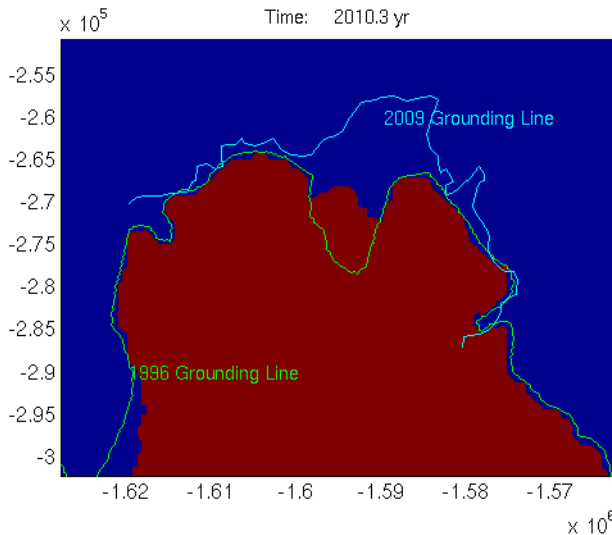
Inversion and data
assimilationIce/atmosphere
interactions

Ice/ocean interactions

Other capabilities

Numerics

Conclusions



Capabilities

3D Hydrostatic grounding line migration

Introduction

Capabilities

Diagnostic Models

Inversion

Parallel Computing

Rifting/Faulting

Higher-order, Full-Stokes

Anisotropic Adaptation

Prognostic Models

Thermal Analysis

Sensitivity Analysis

Ice Thickness Assimilation

3D Hydrostatic Grounding
Line Migration

Hydrology

Ice/Atmosphere
Interaction

What ISSM cannot do

Ice flow models

Basal conditions

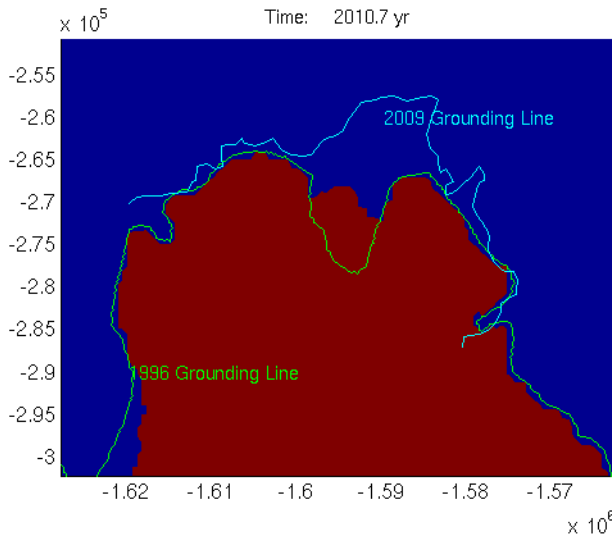
Inversion and data
assimilationIce/atmosphere
interactions

Ice/ocean interactions

Other capabilities

Numerics

Conclusions



Capabilities

Hydrology model

Introduction

Capabilities

Diagnostic Models

Inversion

Parallel Computing

Rifting/Faulting

Higher-order, Full-Stokes

Anisotropic Adaptation

Prognostic Models

Thermal Analysis

Sensitivity Analysis

Ice Thickness Assimilation

3D Hydrostatic Grounding

Line Migration

Hydrology

Ice/Atmosphere

Interaction

What ISSM cannot do

Ice flow models

Basal conditions

Inversion and data

assimilation

Ice/atmosphere
interactions

Ice/ocean interactions

Other capabilities

Numerics

Conclusions

[Le Brocq et al., 2009]: the evolution of the water-film thickness (w) is given by:

$$\frac{dw}{dt} = S - \nabla \cdot (w \bar{u}_w)$$

With w the water thickness, S the basal melting rate and \bar{u}_w the depth-averaged water velocity vector.

Assuming a laminar flow between two parallel plates:

$$\bar{u}_w = \frac{w^2 \nabla \Phi}{12\mu} \quad \text{and} \quad \Phi = \rho_i g z_s + (\rho_w - \rho_i) g z_b - N$$

where μ is the water viscosity, z_s and z_b the surface and bed elevations, N the effective pressure and Φ the pressure potential.

Capabilities

Hydrology model

Introduction

Capabilities

Diagnostic Models

Inversion

Parallel Computing

Rifting/Faulting

Higher-order, Full-Stokes

Anisotropic Adaptation

Prognostic Models

Thermal Analysis

Sensitivity Analysis

Ice Thickness Assimilation

3D Hydrostatic Grounding
Line Migration

Hydrology

Ice/Atmosphere
Interaction

What ISSM cannot do

Ice flow models

Basal conditions

Inversion and data
assimilationIce/atmosphere
interactions

Ice/ocean interactions

Other capabilities

Numerics

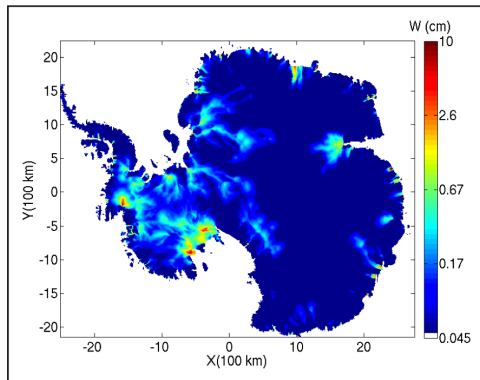
Conclusions

Because we assume a non-arborescent drainage system, we cancel the effective pressure N :

$$\nabla\Phi = \rho_i g \nabla z_s + (\rho_w - \rho_i) g \nabla z_b$$

This set of assumptions results in the following non-linear system:

$$\frac{dw}{dt} = S - \nabla \cdot \left(\frac{w^3}{12\mu} \nabla\Phi \right)$$



Capabilities

Introduction

Capabilities

Diagnostic Models

Inversion

Parallel Computing

Rifting/Faulting

Higher-order, Full-Stokes

Anisotropic Adaptation

Prognostic Models

Thermal Analysis

Sensitivity Analysis

Ice Thickness Assimilation

3D Hydrostatic Grounding

Line Migration

Hydrology

Ice/Atmosphere
Interaction

What ISSM cannot do

Ice flow models

Basal conditions

Inversion and data
assimilationIce/atmosphere
interactions

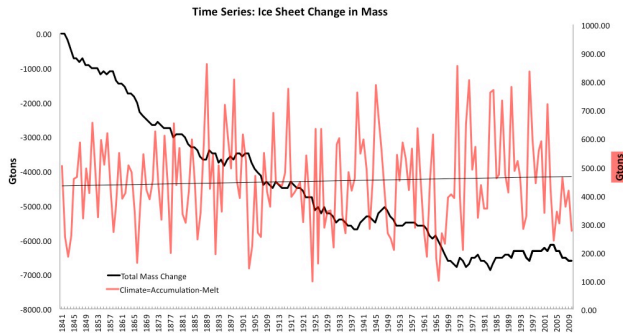
Ice/ocean interactions

Other capabilities

Numerics

Conclusions

ISSM now capable of transient forcing at the surface, using SMB time series (Schelegel et al., 2012, in revision).



In addition, new PDD model contributed by Kevin Le Morzadec.

Capabilities

Ice models

Introduction

Capabilities

Diagnostic Models

Inversion

Parallel Computing

Rifting/Faulting

Higher-order, Full-Stokes

Anisotropic Adaptation

Prognostic Models

Thermal Analysis

Sensitivity Analysis

Ice Thickness Assimilation

3D Hydrostatic Grounding

Line Migration

Hydrology

Ice/Atmosphere

Interaction

What ISSM cannot do

Ice flow models

Basal conditions

Inversion and data
assimilationIce/atmosphere
interactions

Ice/ocean interactions

Other capabilities

Numerics

Conclusions

- Ice anisotropy not included (ice fabrics)
- Ice considered isotropic
- Cold ice model used in thermal model
- No polythermal ice
- Moving grounding line based on hydrostatic equilibrium
- Not implemented for full-Stokes (based on contact mechanics)
- Ice front and margins fixed in time, no calving law
- Calving rate equal to ice velocity

Capabilities

Basal conditions

Introduction

Capabilities

Diagnostic Models

Inversion

Parallel Computing

Rifting/Faulting

Higher-order, Full-Stokes

Anisotropic Adaptation

Prognostic Models

Thermal Analysis

Sensitivity Analysis

Ice Thickness Assimilation

3D Hydrostatic Grounding

Line Migration

Hydrology

Ice/Atmosphere

Interaction

What ISSM cannot do

Ice flow models

Basal conditions

Inversion and data

assimilation

Ice/atmosphere

interactions

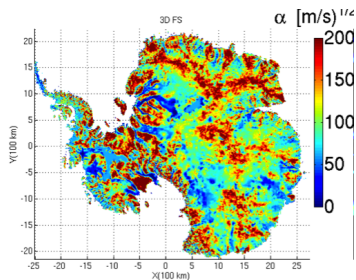
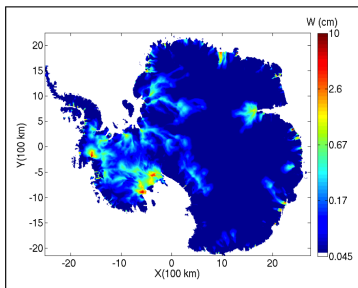
Ice/ocean interactions

Other capabilities

Numerics

Conclusions

- Basal friction fixed in time
 - Hydrology not coupled to basal friction
 - Sub-glacial hydrology only
- No englacial hydrology



Capabilities

Inversions and data assimilation

Introduction

Capabilities

Diagnostic Models

Inversion

Parallel Computing

Rifting/Faulting

Higher-order, Full-Stokes

Anisotropic Adaptation

Prognostic Models

Thermal Analysis

Sensitivity Analysis

Ice Thickness Assimilation

3D Hydrostatic Grounding

Line Migration

Hydrology

Ice/Atmosphere

Interaction

What ISSM cannot do

Ice flow models

Basal conditions

Inversion and data

assimilation

Ice/atmosphere

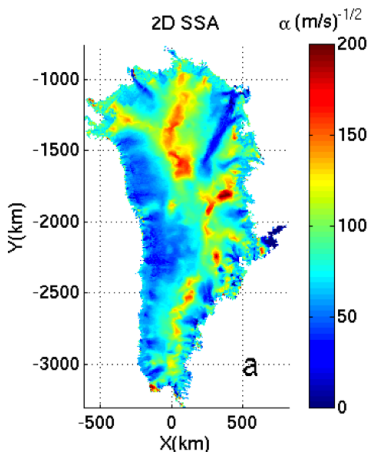
interactions

Ice/ocean interactions

Other capabilities

Numerics

Conclusions



Inversions limited to:

- Ice rheology
- Basal friction
- Ice thickness consistency with velocities

→ Assimilation for a given time

Capabilities

Ice/atmosphere interactions

Introduction

Capabilities

Diagnostic Models

Inversion

Parallel Computing

Rifting/Faulting

Higher-order, Full-Stokes

Anisotropic Adaptation

Prognostic Models

Thermal Analysis

Sensitivity Analysis

Ice Thickness Assimilation

3D Hydrostatic Grounding

Line Migration

Hydrology

Ice/Atmosphere
Interaction

Two way coupling to Atmosphere not implemented.

No surface model for atmospheric coupling. This will probably remain on the Atmospheric side.

What ISSM cannot do

Ice flow models

Basal conditions

Inversion and data
assimilation**Ice/atmosphere
interactions**

Ice/ocean interactions

Other capabilities

Numerics

Conclusions

Capabilities

Introduction

Capabilities

Diagnostic Models

Inversion

Parallel Computing

Rifting/Faulting

Higher-order, Full-Stokes

Anisotropic Adaptation

Prognostic Models

Thermal Analysis

Sensitivity Analysis

Ice Thickness Assimilation

3D Hydrostatic Grounding

Line Migration

Hydrology

Ice/Atmosphere

Interaction

What ISSM cannot do

Ice flow models

Basal conditions

Inversion and data

assimilation

Ice/atmosphere

interactions

Ice/ocean interactions

Other capabilities

Numerics

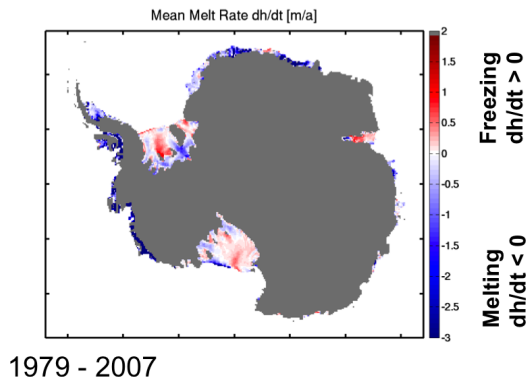
Conclusions

Ice/ocean interactions

Interaction between ice and ocean not included

- Melting rates under ice shelved prescribed
- Sea level fixed at $z = 0$

→ ECCO3 project to couple ocean and ice models

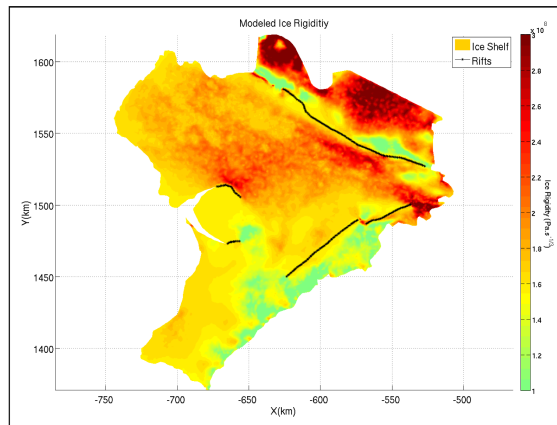


Schodlok et al., submitted

Capabilities

Other capabilities

- Post-glacial rebound: efforts to couple with PGR Model from Ivins et al, 1993.
- Rift propagation. Ongoing dvpt to include transient damage propagation.



Introduction

Capabilities

Diagnostic Models

Inversion

Parallel Computing

Rifting/Faulting

Higher-order, Full-Stokes

Anisotropic Adaptation

Prognostic Models

Thermal Analysis

Sensitivity Analysis

Ice Thickness Assimilation

3D Hydrostatic Grounding

Line Migration

Hydrology

Ice/Atmosphere

Interaction

What ISSM cannot do

Ice flow models

Basal conditions

Inversion and data

assimilation

Ice/atmosphere

interactions

Ice/ocean interactions

Other capabilities

Numerics

Conclusions

Capabilities

Numerics

Introduction

Capabilities

Diagnostic Models

Inversion

Parallel Computing

Rifting/Faulting

Higher-order, Full-Stokes

Anisotropic Adaptation

Prognostic Models

Thermal Analysis

Sensitivity Analysis

Ice Thickness Assimilation

3D Hydrostatic Grounding

Line Migration

Hydrology

Ice/Atmosphere

Interaction

What ISSM cannot do

Ice flow models

Basal conditions

Inversion and data
assimilationIce/atmosphere
interactions

Ice/ocean interactions

Other capabilities

Numerics

Conclusions

- Only triangle (2D) and prismatic (3D) elements
- No quadrangle elements
- Only P1 (piecewise linear nodal functions)
- No quadratic or higher-order interpolations
- Direct solver used for full-Stokes model
- No scalable solver (iterative solver). Ongoing work by Feras Habbal for scalable solvers using PETSc.

Capabilities

Conclusions

Introduction

Capabilities

Diagnostic Models

Inversion

Parallel Computing

Rifting/Faulting

Higher-order, Full-Stokes

Anisotropic Adaptation

Prognostic Models

Thermal Analysis

Sensitivity Analysis

Ice Thickness Assimilation

3D Hydrostatic Grounding

Line Migration

Hydrology

Ice/Atmosphere
Interaction

What ISSM cannot do

Ice flow models

Basal conditions

Inversion and data
assimilationIce/atmosphere
interactions

Ice/ocean interactions

Other capabilities

Numerics

- ISSM represents a wide array of capabilities, geared toward solving specific cryosphere challenges such as projections of future sea level rise
- Extensive software and architecture support, as well as wide array of numerical solutions and physics implemented
- Challenges remain, such as grounding line dynamics using FS, moving margins and ice/ocean interactions

Conclusions

Capabilities

Introduction

Capabilities

Diagnostic Models
Inversion
Parallel Computing
Rifting/Faulting
Higher-order, Full-Stokes
Anisotropic Adaptation
Prognostic Models
Thermal Analysis
Sensitivity Analysis
Ice Thickness Assimilation
3D Hydrostatic Grounding
Line Migration
Hydrology
Ice/Atmosphere
Interaction

What ISSM cannot do

Ice flow models
Basal conditions
Inversion and data
assimilation
Ice/atmosphere
interactions
Ice/ocean interactions
Other capabilities
Numerics

Conclusions

Bibliography I



Amestoy, P. R., Duff, I. S., Koster, J., and L'Excellent, J.-Y. (2001).
A Fully Asynchronous Multifrontal Solver Using Distributed Dynamic
Scheduling.
SIAM J. Matrix Anal. Appl., 23(1):15–41.



Amestoy, P. R., Guermouche, A., L'Excellent, J.-Y., and Pralet, S.
(2006).
Hybrid scheduling for the parallel solution of linear systems.
Parallel Computing, 32(2):136–156.



Aschwanden, A., Bueler, E., Khroulev, C., and Blatter, H. (2012).
An enthalpy formulation for glaciers and ice sheets.
J. Glaciol., 58, 209:441–457.



Balay, S., Buschelman, K., Eijkhout, V., Gropp, W. D., Kaushik, D.,
Knepley, M. G., McInnes, L. C., Smith, B. F., and Zhang, H. (2008).
Petsc users manual.
Technical Report ANL-95/11 - Revision 3.0.0, Argonne National
Laboratory.

Capabilities

Introduction

Capabilities

Diagnostic Models

Inversion

Parallel Computing

Rifting/Faulting

Higher-order, Full-Stokes

Anisotropic Adaptation

Prognostic Models

Thermal Analysis

Sensitivity Analysis

Ice Thickness Assimilation

3D Hydrostatic Grounding

Line Migration

Hydrology

Ice/Atmosphere

Interaction

What ISSM cannot do

Ice flow models

Basal conditions

Inversion and data

assimilation

Ice/atmosphere

interactions

Ice/ocean interactions

Other capabilities

Numerics

Conclusions

Bibliography II



Balay, S., Buschelman, K., Gropp, W. D., Kaushik, D., Knepley, M. G., McInnes, L. C., Smith, B. F., and Zhang, H. (2009).

PETSc Website.

<http://www.mcs.anl.gov/petsc>.



Balay, S., Gropp, W. D., McInnes, L. C., and Smith, B. F. (1997).

Efficient Management of Parallelism in Object Oriented Numerical Software Libraries.

In Arge, E., Bruaset, A. M., and Langtangen, H. P., editors, *Modern Software Tools in Scientific Computing*, pages 163–202. Birkhäuser Press.



Gropp, W., Lusk, E., Doss, N., and Skjellum, A. (1996).

A high-performance, portable implementation of the MPI message passing interface standard.

Parallel Computing, 22(6):789–828.

Capabilities

Bibliography III

Introduction

Capabilities

Diagnostic Models

Inversion

Parallel Computing

Rifting/Faulting

Higher-order, Full-Stokes

Anisotropic Adaptation

Prognostic Models

Thermal Analysis

Sensitivity Analysis

Ice Thickness Assimilation

3D Hydrostatic Grounding

Line Migration

Hydrology

Ice/Atmosphere

Interaction

What ISSM cannot do

Ice flow models

Basal conditions

Inversion and data

assimilation

Ice/atmosphere

interactions

Ice/ocean interactions

Other capabilities

Numerics

Conclusions



Gropp, W. D. and Lusk, E. (1996).

*User's Guide for `mpich`, a Portable Implementation of MPI.*Mathematics and Computer Science Division, Argonne National Laboratory.
ANL-96/6.

Hecht, F. (2006).

BAMG: Bi-dimensional anisotropic mesh generator.

Technical report, FreeFem++.



Holland, D. and Jenkins, A. (1999).

Modeling thermodynamic ice-ocean interactions at the base of an ice shelf.

J. Phys. Oceanogr., 29(8, Part 1):1787–1800.

Karypis, G. and Kumar, V. (1998).

A Software Package for Partitioning Unstructured Graphs, Partitioning Meshes, and Computing Fill-Reducing Orderings of Sparse Matrices.
University of Minnesota.

Capabilities

Introduction

Capabilities

Diagnostic Models

Inversion

Parallel Computing

Rifting/Faulting

Higher-order, Full-Stokes

Anisotropic Adaptation

Prognostic Models

Thermal Analysis

Sensitivity Analysis

Ice Thickness Assimilation

3D Hydrostatic Grounding

Line Migration

Hydrology

Ice/Atmosphere
Interaction

What ISSM cannot do

Ice flow models

Basal conditions

Inversion and data
assimilationIce/atmosphere
interactions

Ice/ocean interactions

Other capabilities

Numerics

Conclusions

Bibliography IV



Le Brocq, A., Payne, A., Siegert, M., and Alley, R. (2009).
A subglacial water-flow model for west antarctica.
J. Glaciol., 55(193):879–888.



Morlighem, M., Rignot, E., Seroussi, H., Larour, E., Ben Dhia, H., and
Aubry, D. (2011).
A mass conservation approach for mapping glacier ice thickness.
Geophys. Res. Lett., 38, L19503:1–6.

Thanks!

